

LA TUTELA DELLA SALUTE MENTALE NEL VENETO

Rapporto 2007

FLUSSO SCHEDA DI DIMISSIONE OSPEDALIERA
GRAFICI E MAPPE

AZIENDA ULSS 3
BASSANO DEL GRAPPA

Novembre 2008

A cura del Gruppo Tecnico-Scientifico Flussi Informativi Psichiatria

<i>Francesco Amaddeo</i>	<i>Università degli Studi di Verona, Dipartimento di Medicina e Sanità Pubblica, Sezione di Psichiatria</i>
<i>Andrea Angelozzi</i>	<i>Azienda ULSS n. 16 Padova</i>
<i>Gerardo Favaretto</i>	<i>Azienda ULSS n. 9 Treviso</i>
<i>Silvio Frazzlingaro</i>	<i>Azienda ULSS n. 22 Bussolengo</i>
<i>Renato Magnabosco</i>	<i>Azienda ULSS n. 5 Ovest Vicentino</i>
<i>Lorenzo Rampazzo</i>	<i>Servizio per la Tutela della Salute Mentale – Direzione regionale Piani e Programmi Socio Sanitari</i>
<i>Paolo Spolaore</i>	<i>Centro Regionale di Riferimento per il Coordinamento del Sistema Epidemiologico Regionale</i>
<i>Emanuele Toniolo</i>	<i>Azienda ULSS n. 18 Rovigo</i>
<i>Giuseppe Zamengo</i>	<i>Servizio Sistema Informativo Socio Sanitario e Tecnologie Informatiche – Direzione regionale Risorse Socio Sanitarie</i>

Elaborazioni a cura di

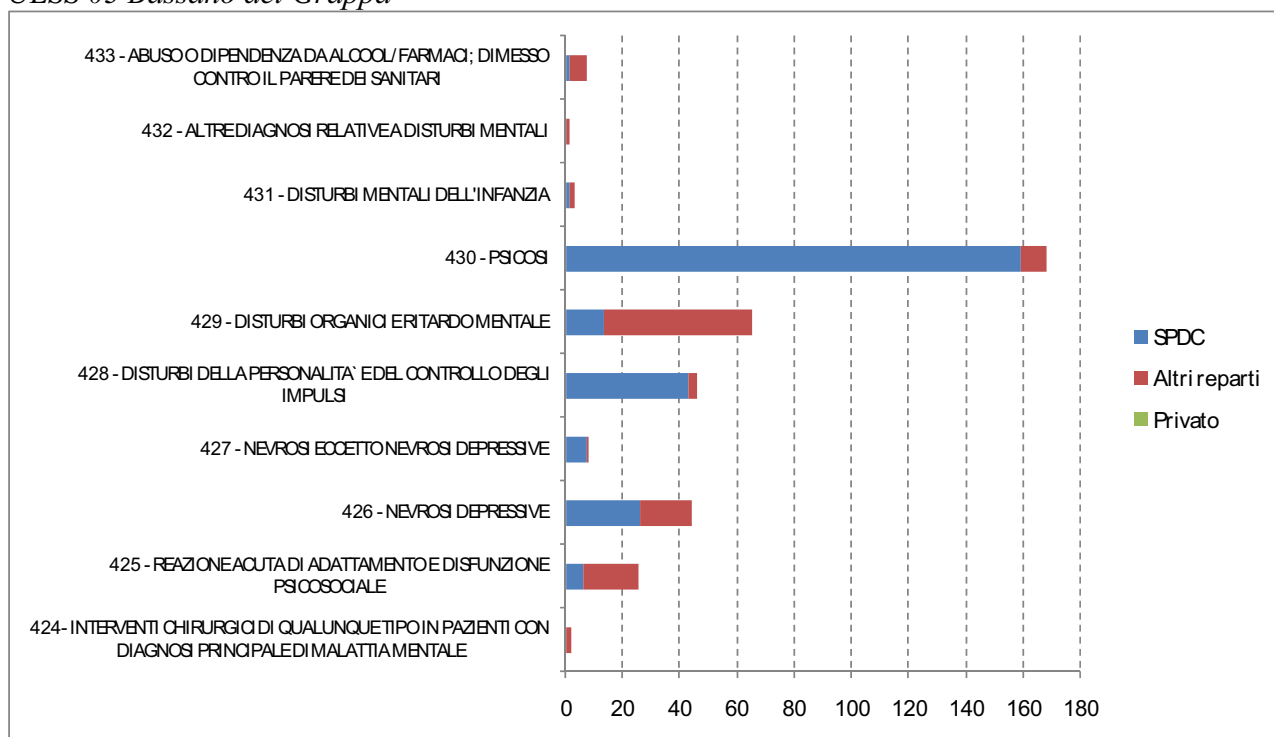
Unità di Ricerca “Registro Psichiatrico dei Casi, Economia e Geografia della Salute Mentale” della Sezione di Psichiatria e Psicologia Clinica, Dipartimento di Medicina e Sanità Pubblica, Università di Verona (Responsabile: prof. Francesco Amaddeo).

Fonte dei dati: Datawarehouse Sanità - Regione Veneto (Giuseppe Zamengo, Andrea Angelozzi).

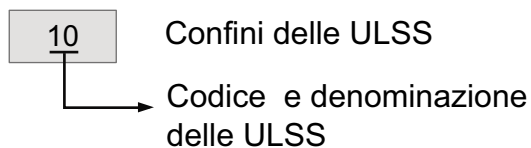
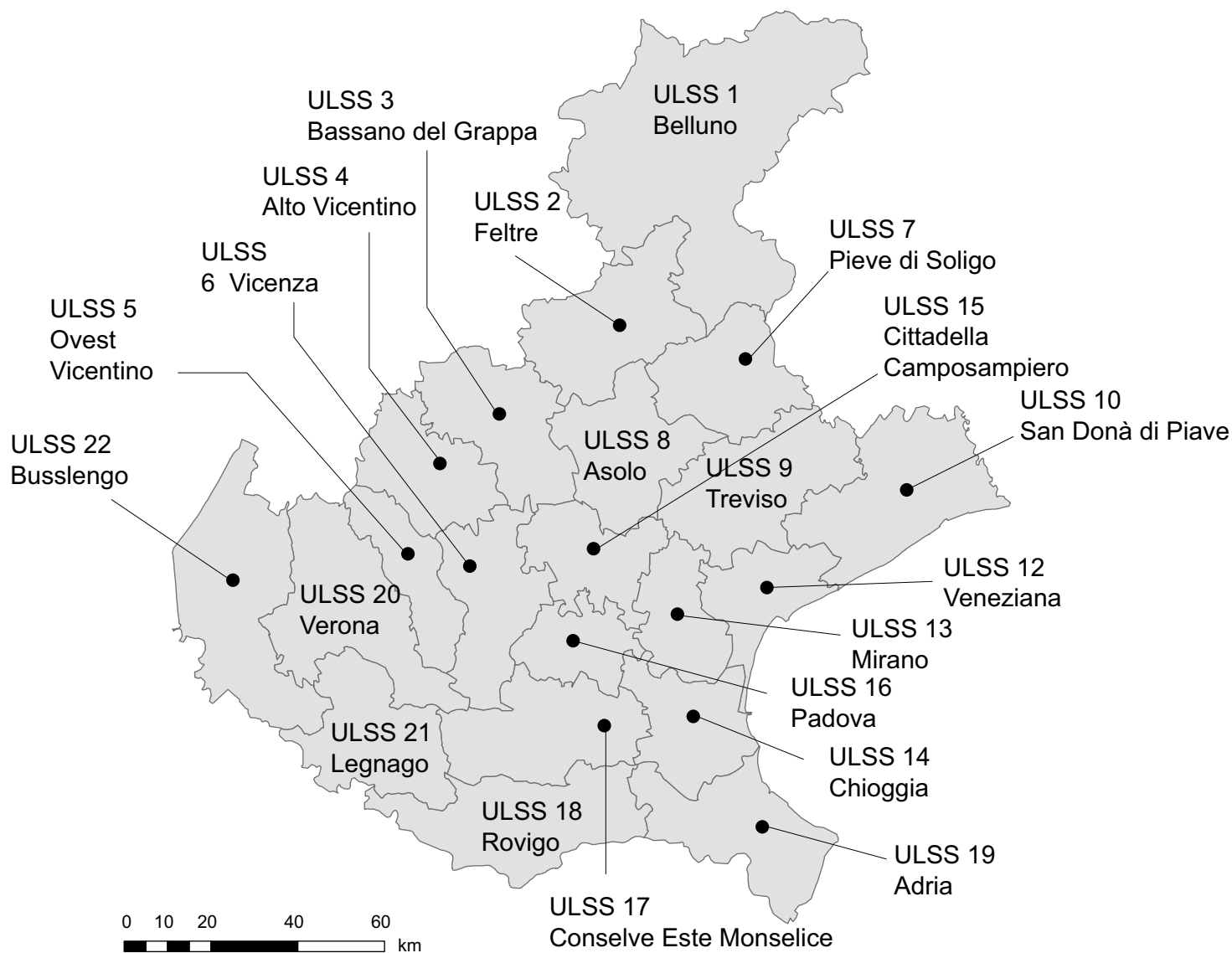
Strutture di riferimento

- *Servizio per la Tutela della Salute Mentale – Direzione regionale Piani e Programmi Socio Sanitari*
Palazzo Molin – San Polo n. 2514, 30125 Venezia
Telefono: 041 2793414; Fax 041 2793425; e-mail: salutementale@regione.veneto.it
- *CRRC SER – Regione Veneto*
Via Ospedale n. 18, 31033 Castelfranco Veneto
Telefono: 0423 732790; Fax: 0423 732791; e-mail: ser@ulssasolo.ven.it
- *Servizio Sistema Informativo Socio Sanitario e Tecnologie Informatiche – Direzione Risorse Socio Sanitarie*
Palazzo Molin – San Polo n. 2514, 30125 Venezia
Telefono: 041 2793450; Fax 041 2793506; e-mail: giuseppe.zamengo@regione.veneto.it

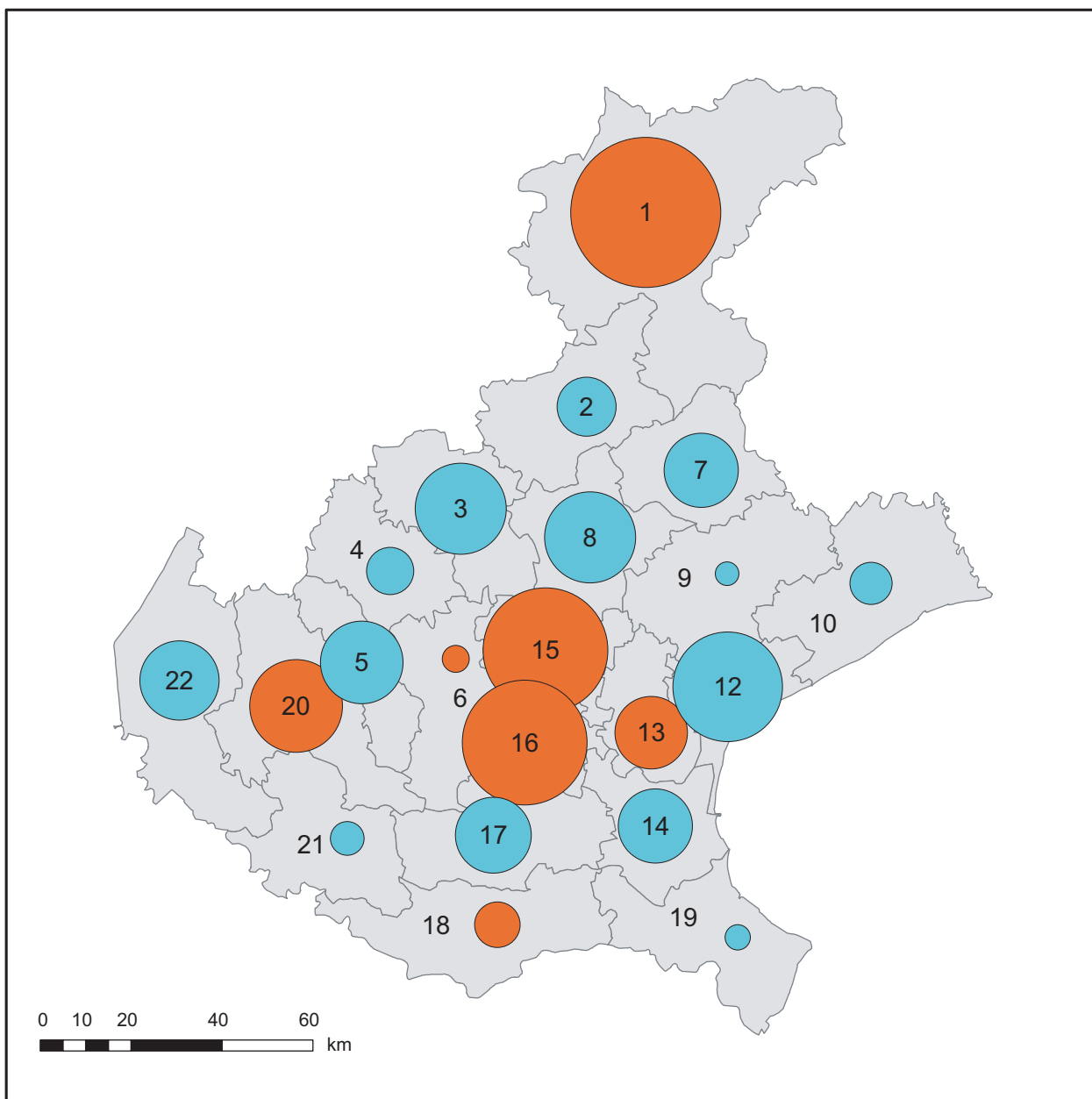
Dimissioni per DRG e per tipologia di reparto di ricovero. Anno 2006.
ULSS 03 Bassano del Grappa



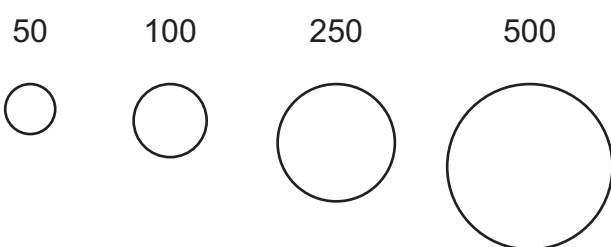
ULSS del Veneto





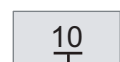
Migrazione dei pazienti psichiatrici verso SPDC in strutture pubbliche (2000-2007). Bilancio migratorio totale



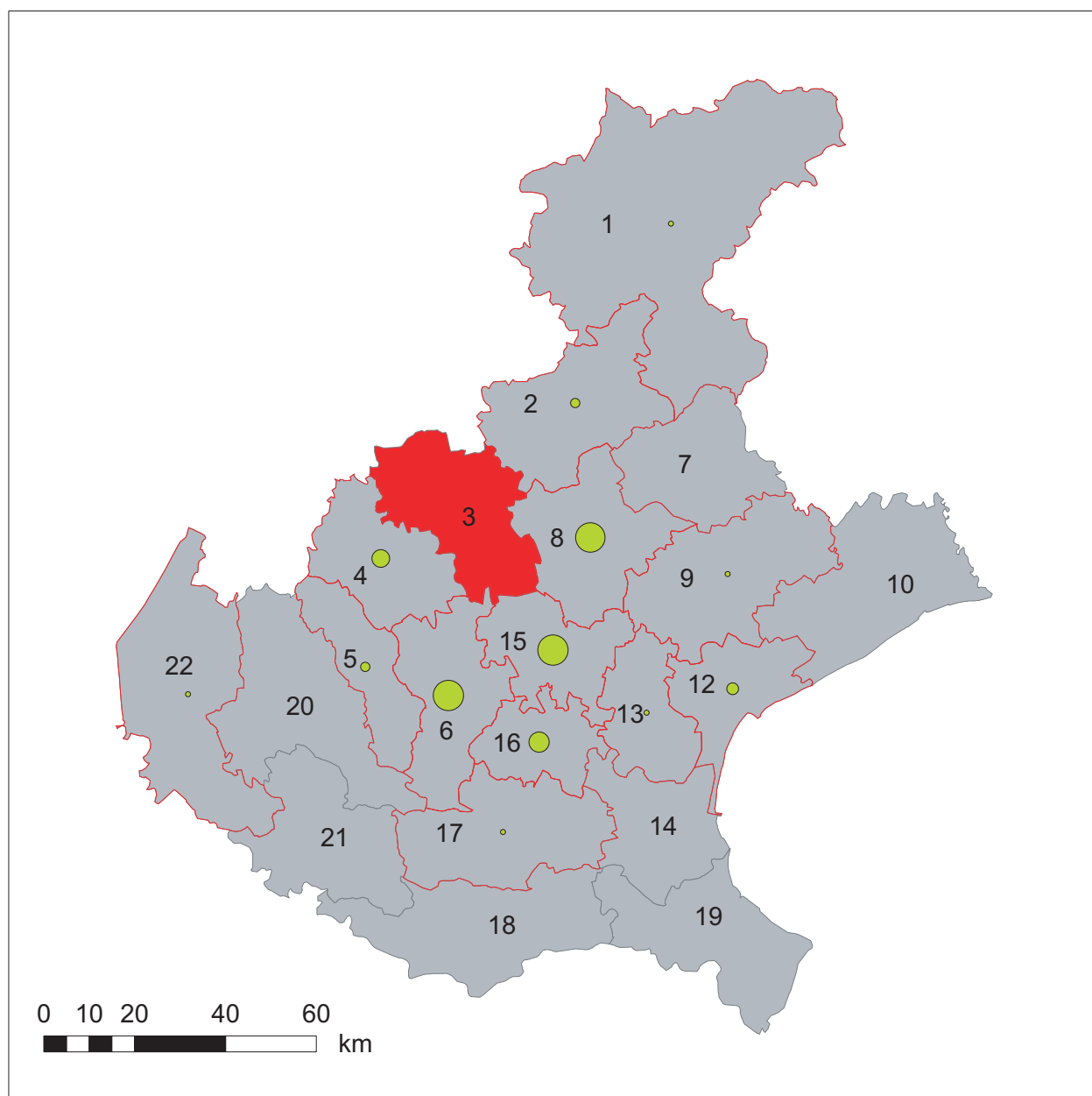
Numero di ricoveri di pazienti migrati



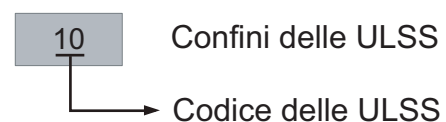
 bilancio positivo (pazienti acquisiti)
 bilancio negativo (pazienti ceduti)




 Confini delle ULSS
 10
 Codice delle ULSS

Migrazione dei pazienti psichiatrici verso SPDC in strutture pubbliche (2000-2007) ULSS 3 Bassano del Grappa



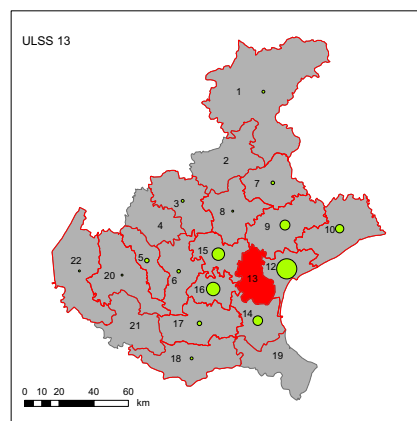
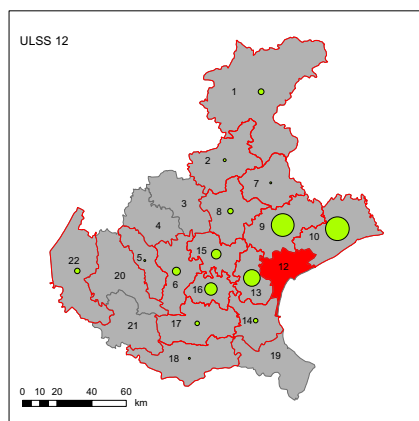
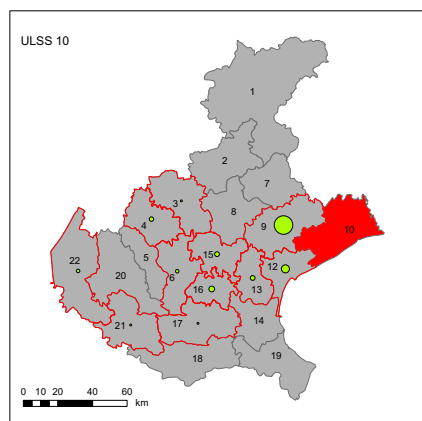
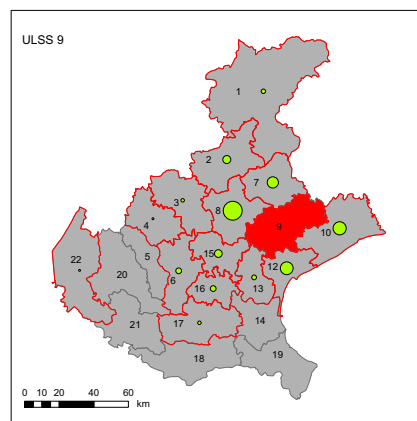
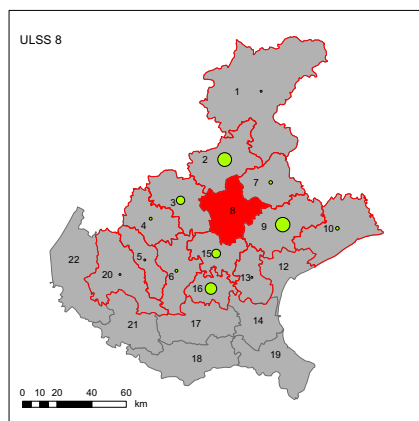
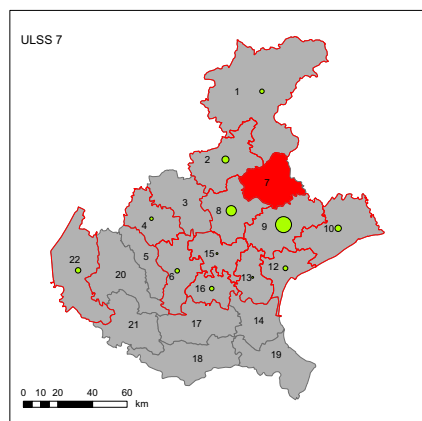
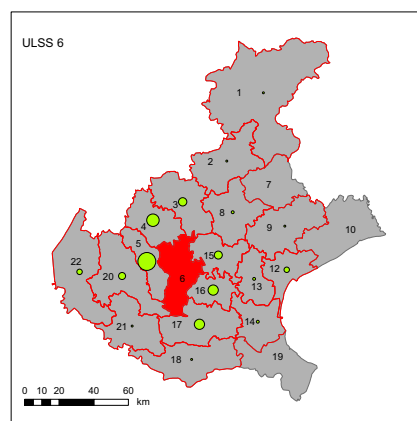
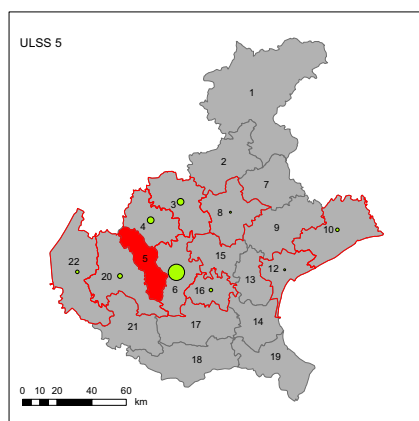
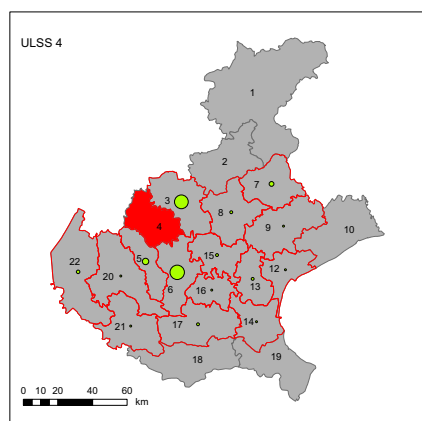
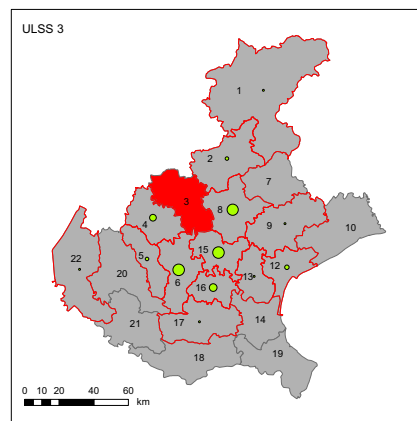
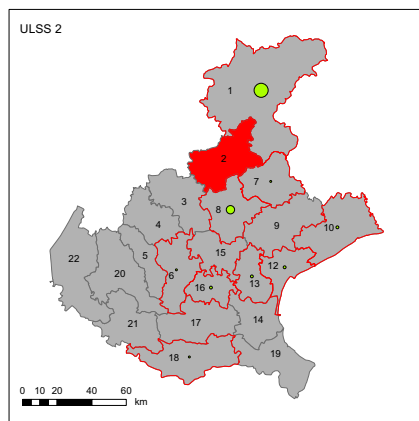
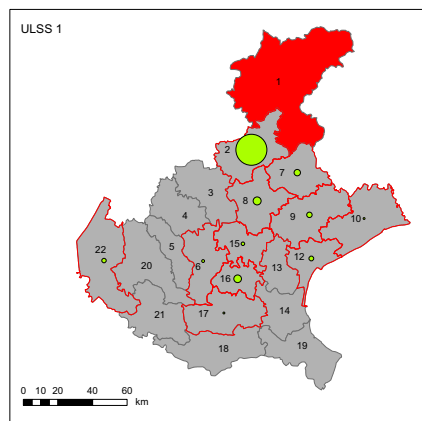
Numero di ricoveri di pazienti migrati

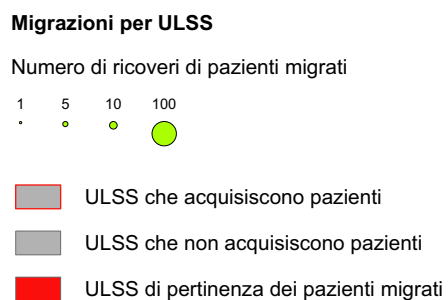
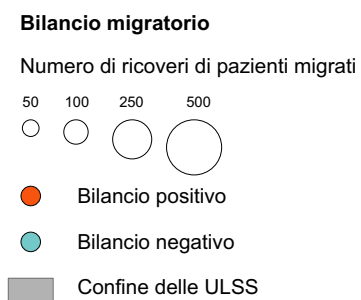
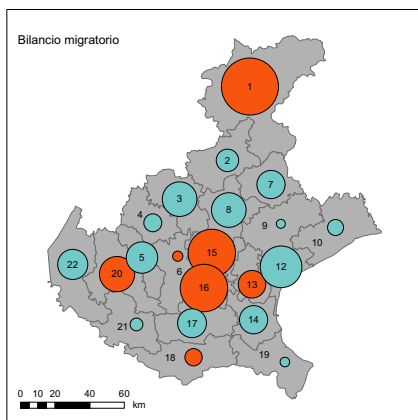
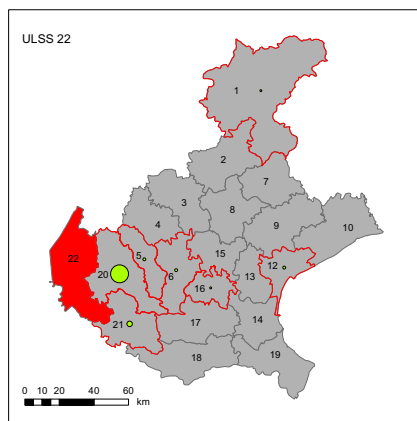
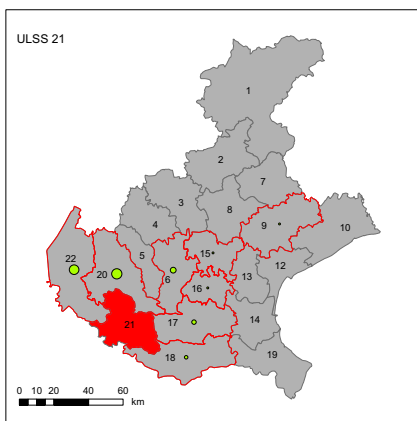
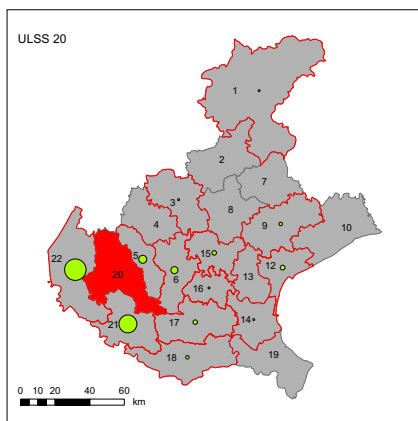
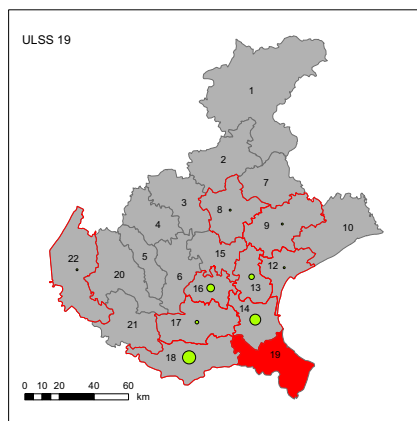
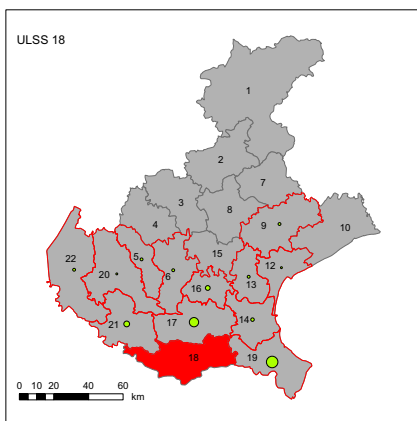
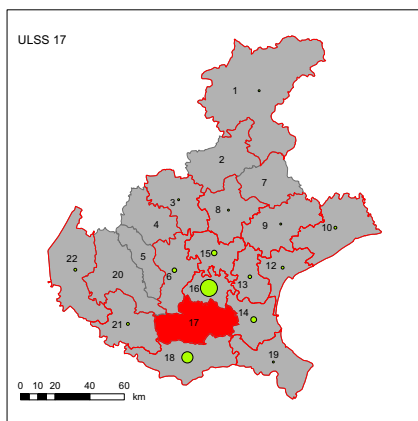
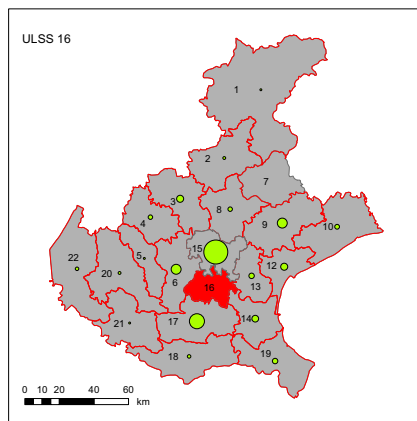
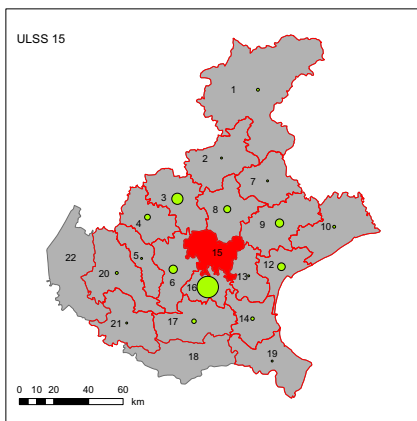
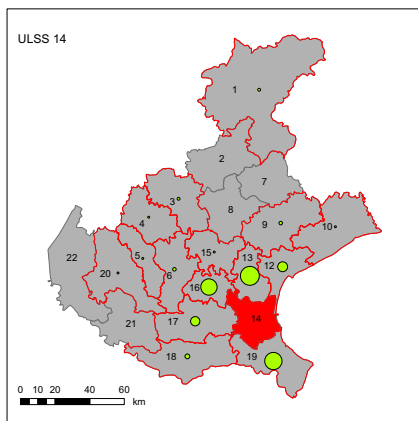


-  ULSS che acquisiscono pazienti
-  ULSS che non acquisiscono pazienti
-  ULSS di pertinenza dei pazienti migrati

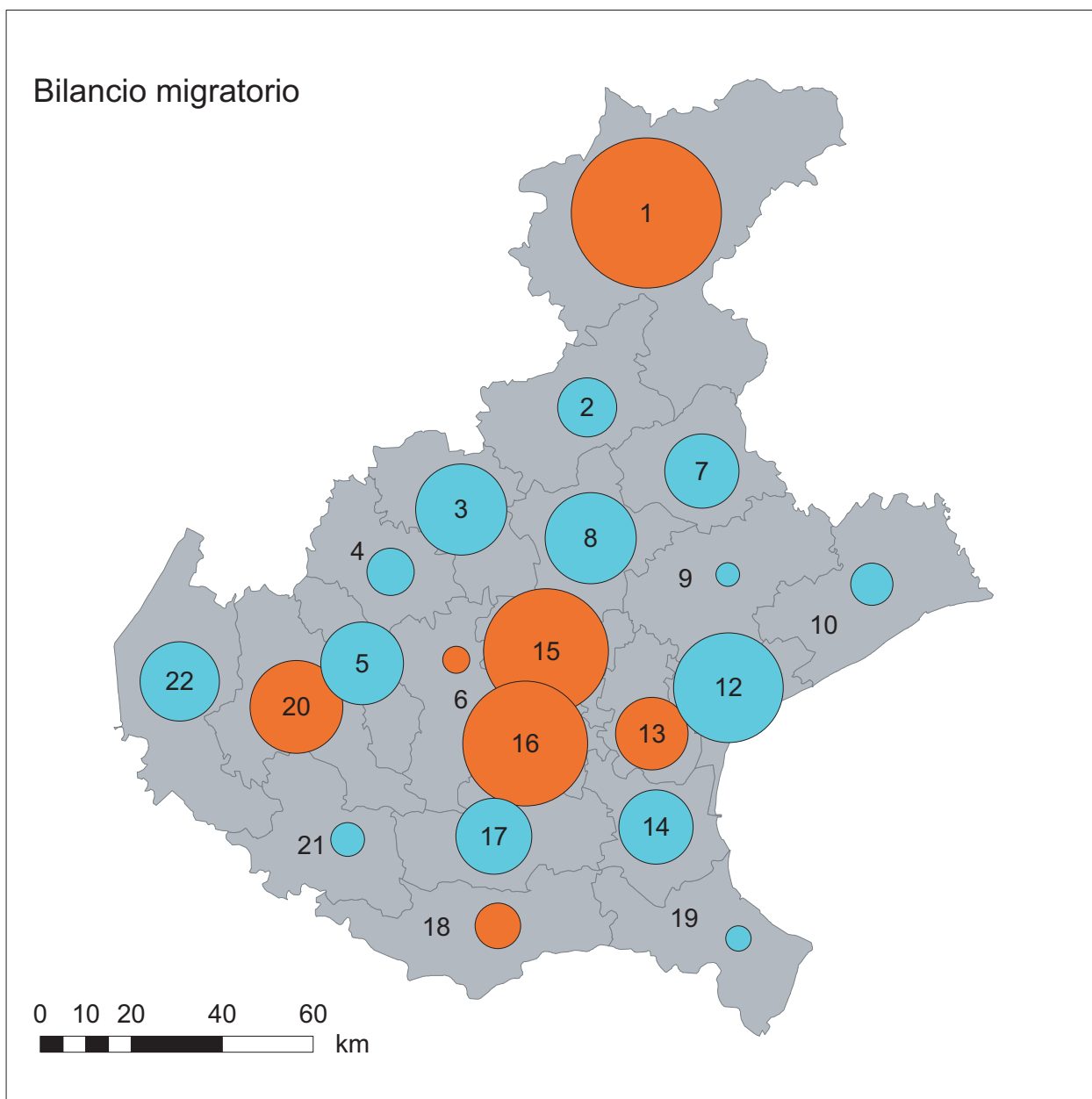
Fonte: Datawarehouse Sanità, Regione Veneto

Migrazione dei pazienti psichiatrici verso SPDC, in strutture pubbliche (2000-2007)

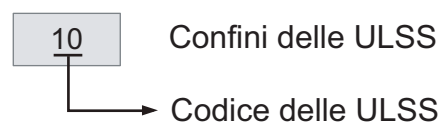
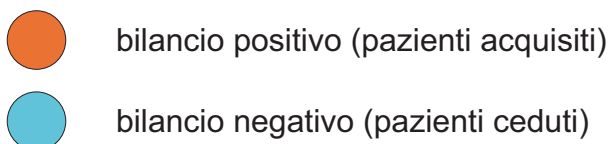
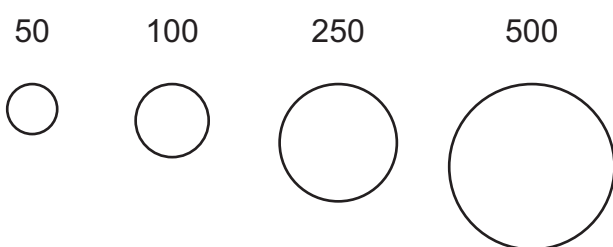




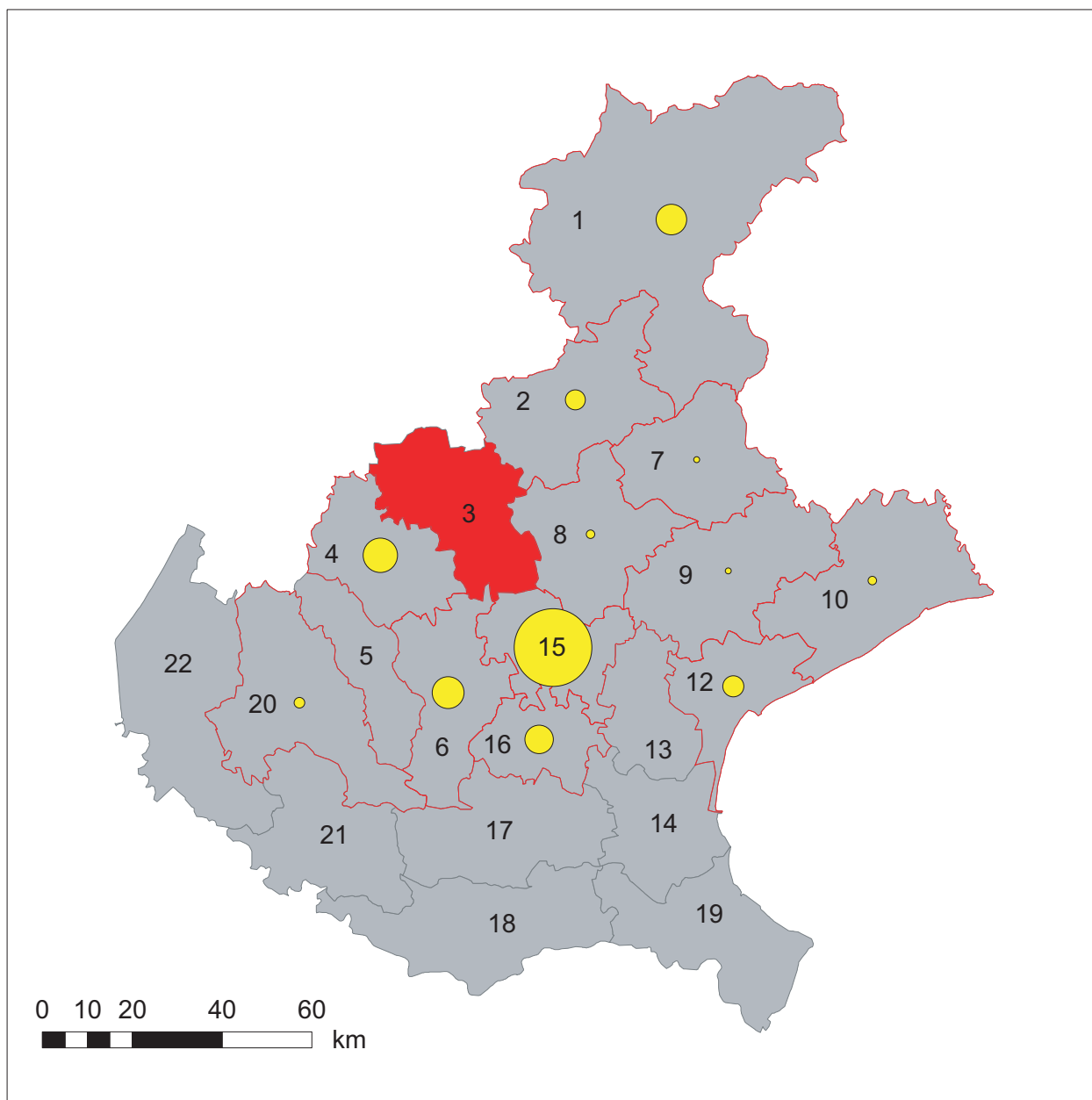
Migrazione dei pazienti psichiatrici verso altri reparti in strutture pubbliche (2000-2007). Bilancio migratorio totale



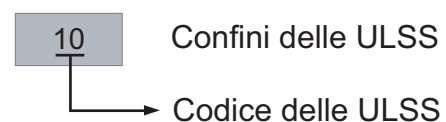
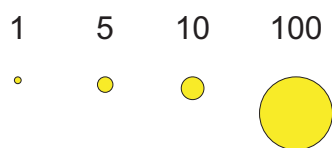
Numero di ricoveri di pazienti migrati



Migrazione dei pazienti psichiatrici verso altri reparti, in strutture pubbliche (2000-2007) ULSS 3 Bassano del Grappa

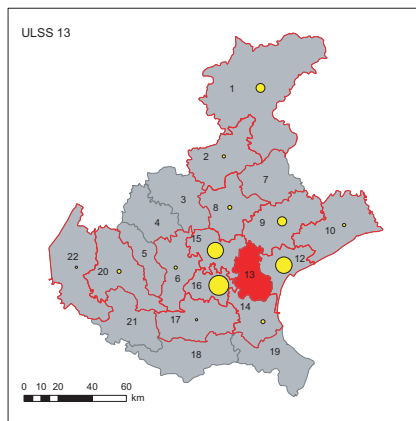
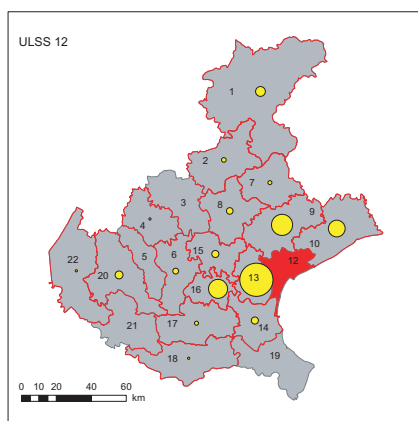
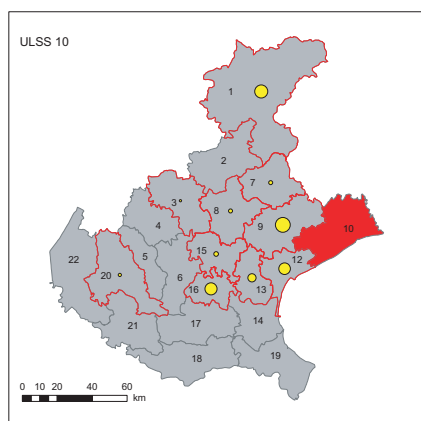
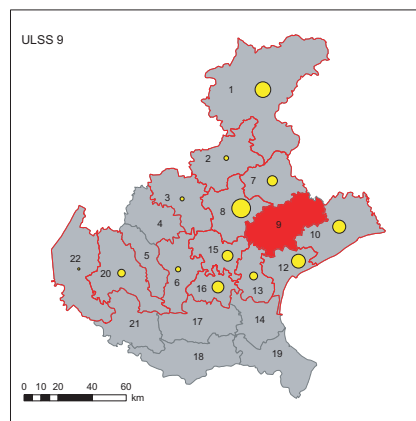
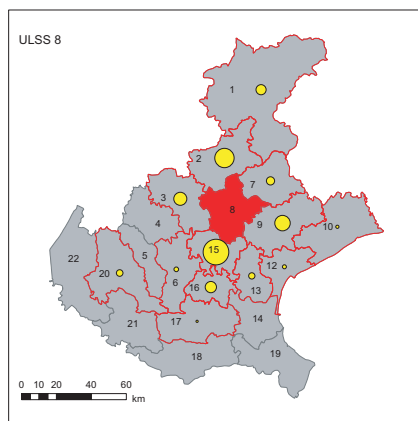
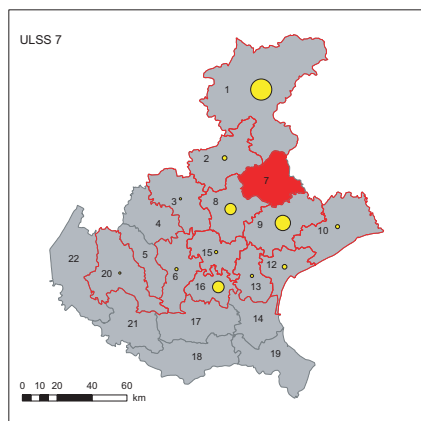
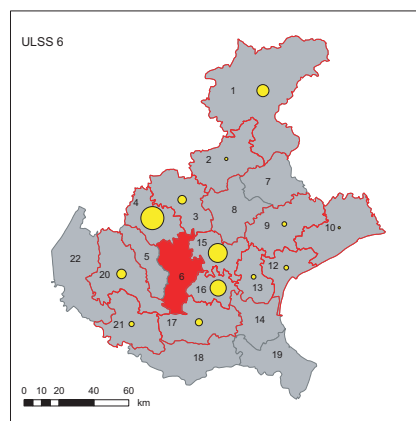
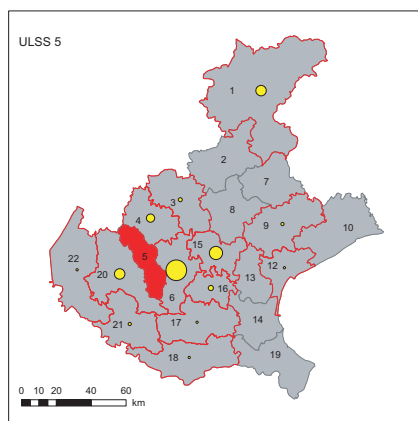
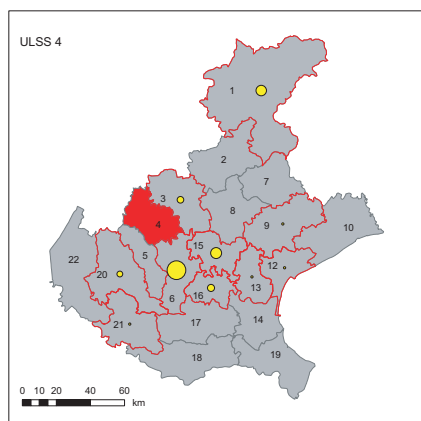
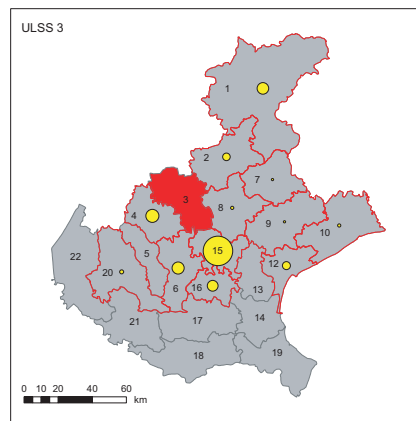
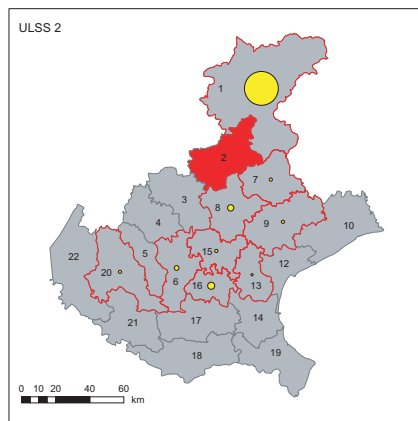
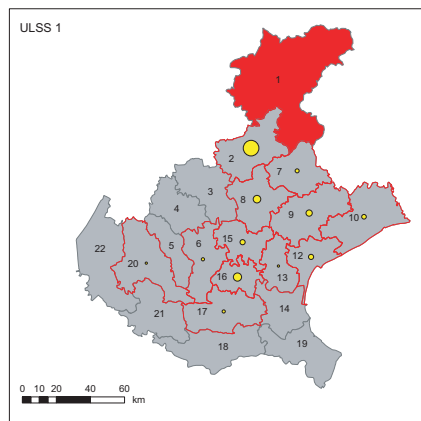


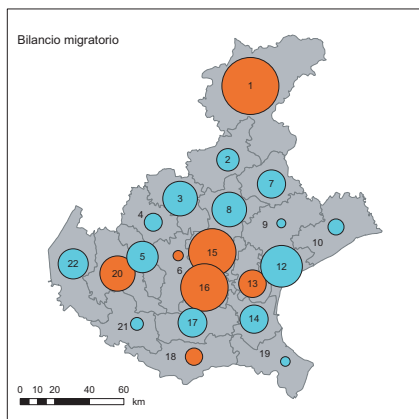
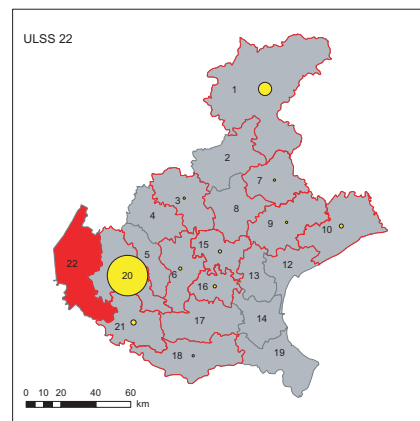
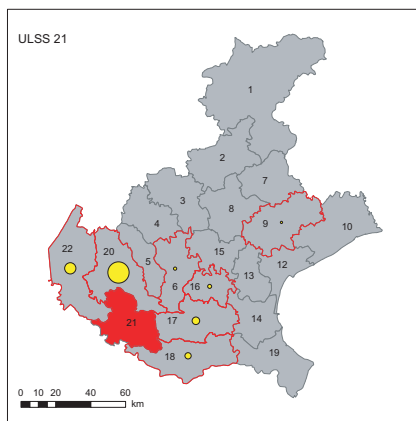
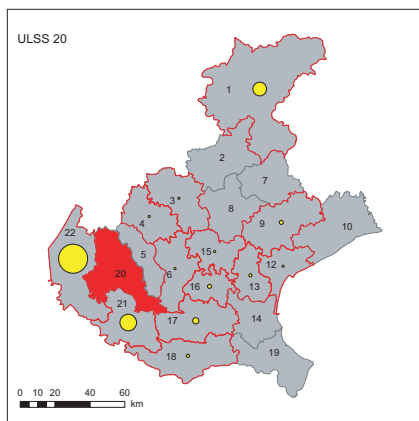
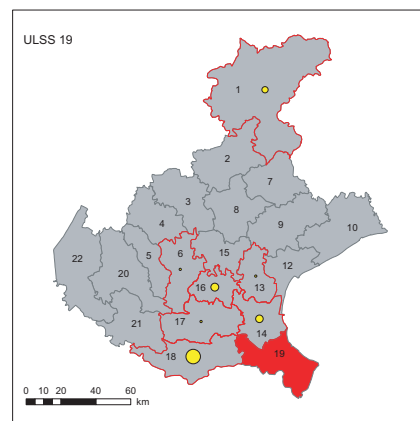
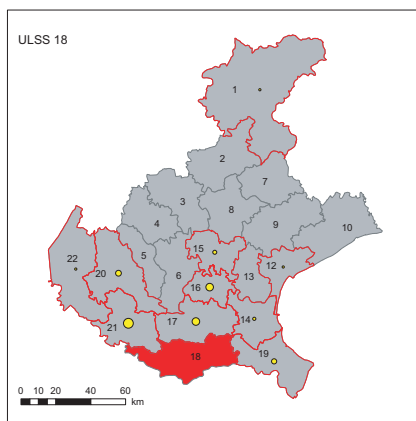
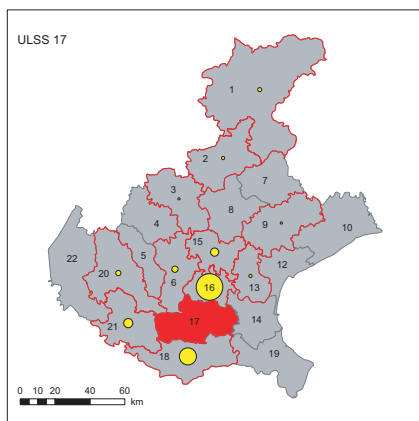
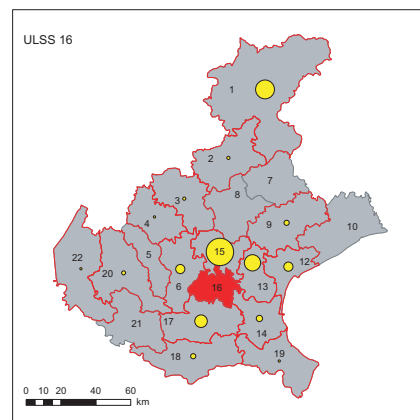
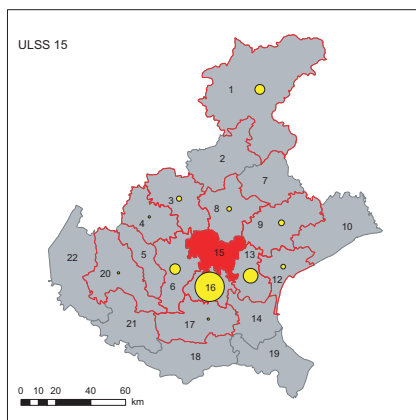
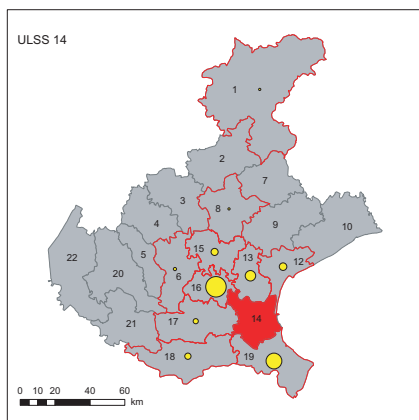
Numero di ricoveri di pazienti migrati



- ULSS che acquisiscono pazienti
- ULSS che non acquisiscono pazienti
- ULSS di pertinenza dei pazienti migrati

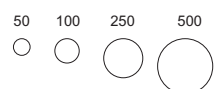
Migrazione dei pazienti psichiatrici verso altri reparti, in strutture pubbliche (2000-2007)





Bilancio migratorio

Numero di ricoveri di pazienti migrati



● Bilancio positivo

● Bilancio negativo

■ Confine delle ULSS

Migrazioni per ULSS

Numero di ricoveri di pazienti migrati

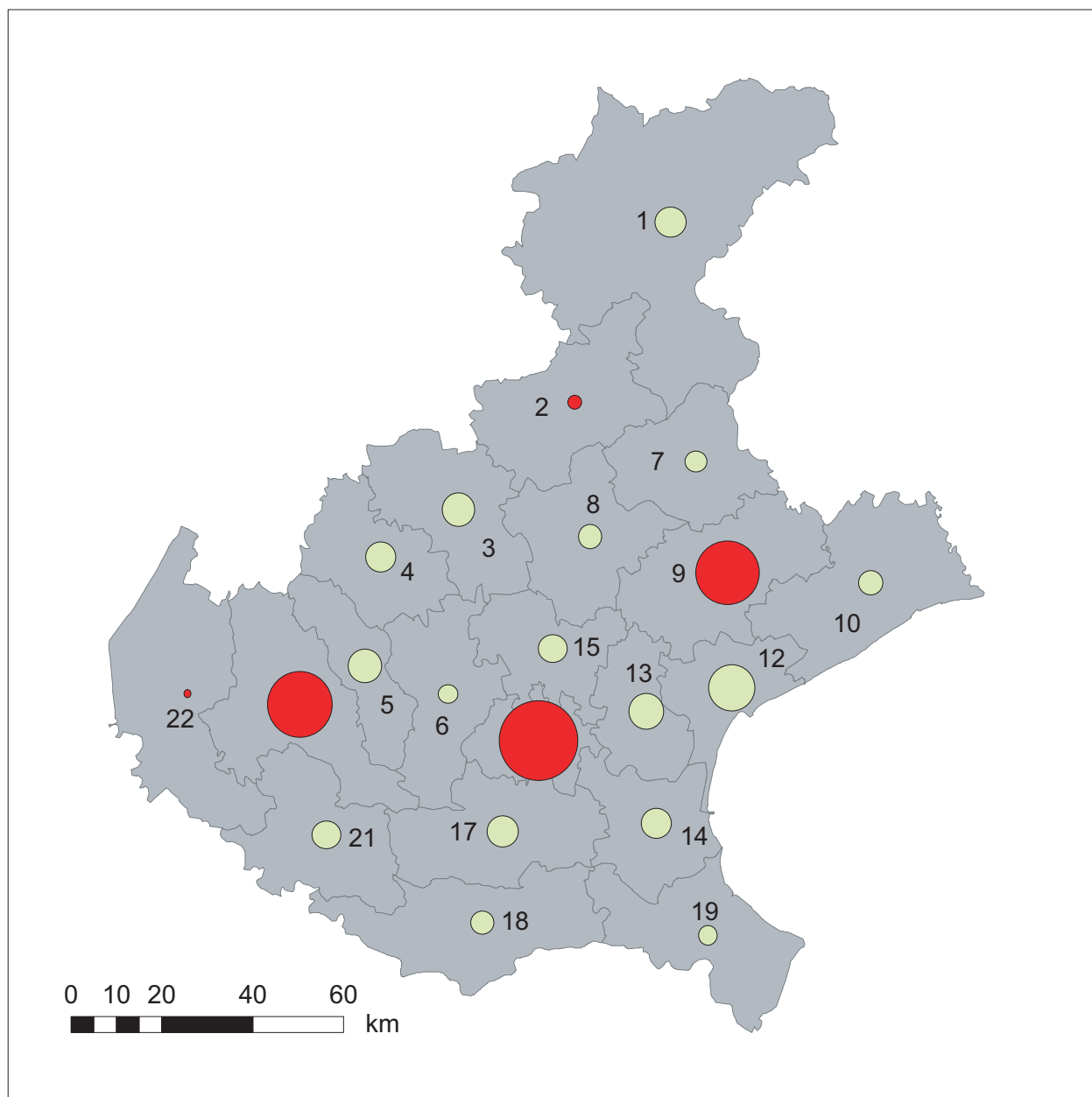


■ ULSS che acquisiscono pazienti

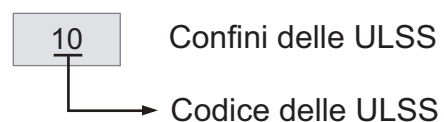
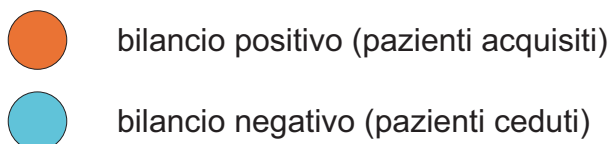
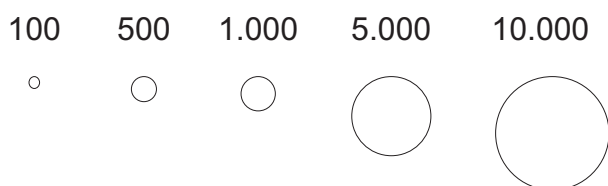
■ ULSS che non acquisiscono pazienti

■ ULSS di pertinenza dei pazienti migrati

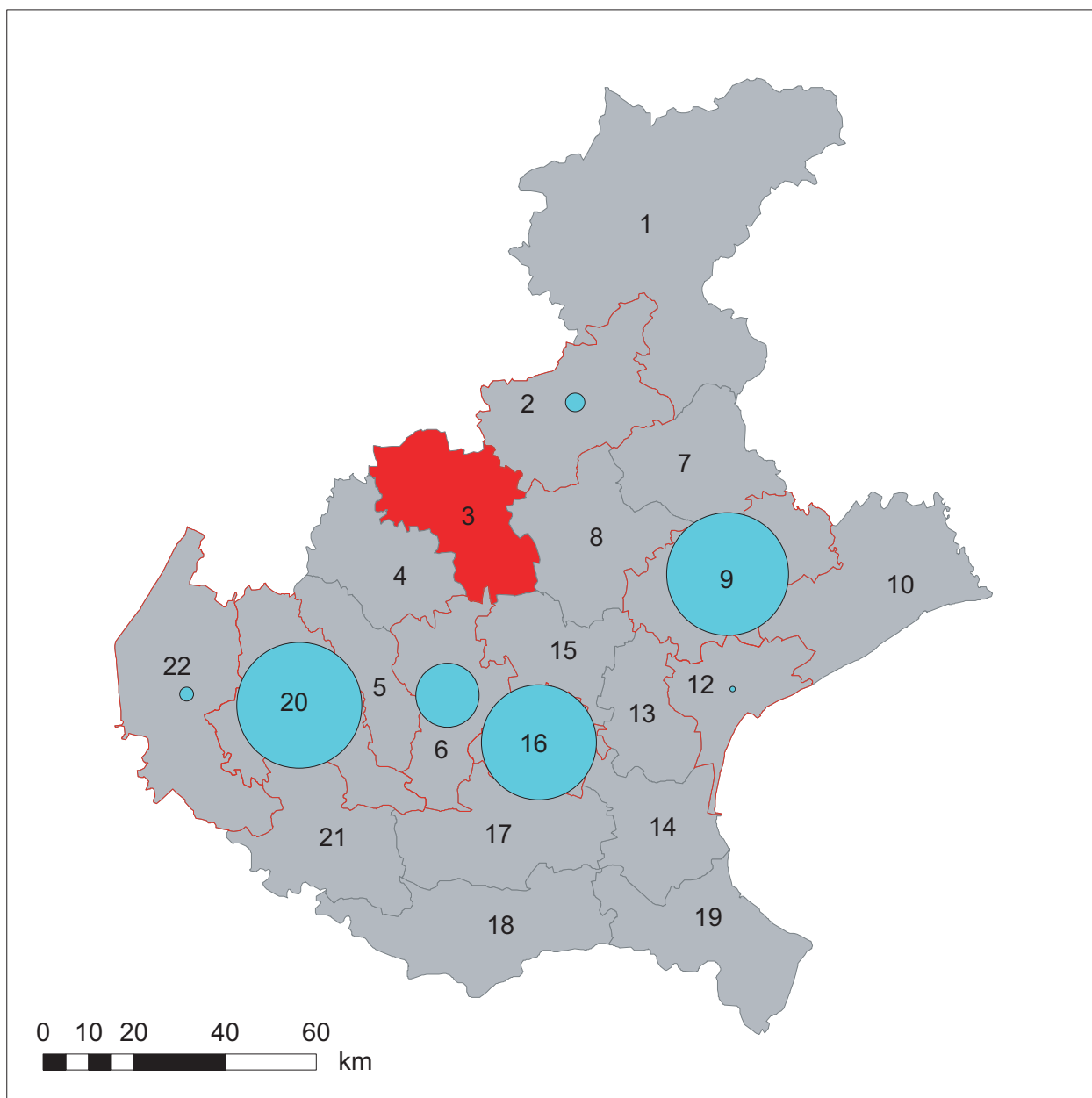
Migrazione dei pazienti psichiatrici verso case di cura private, (2000-2007). Bilancio migratorio totale



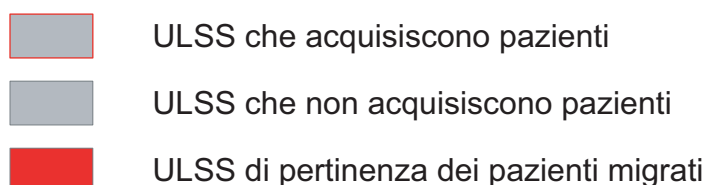
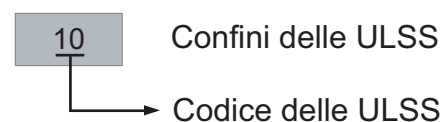
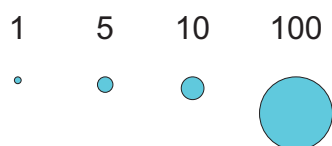
Numero di ricoveri di pazienti migrati



Migrazione dei pazienti psichiatrici verso case di cura private, (2000-2007) ULSS 3 Bassano del Grappa

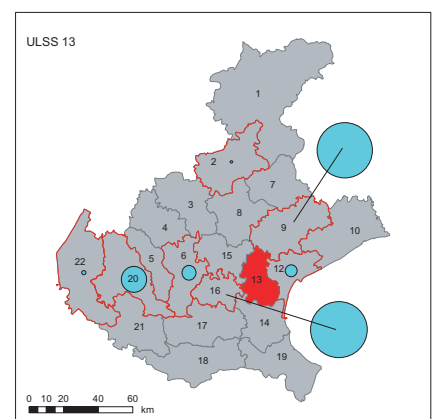
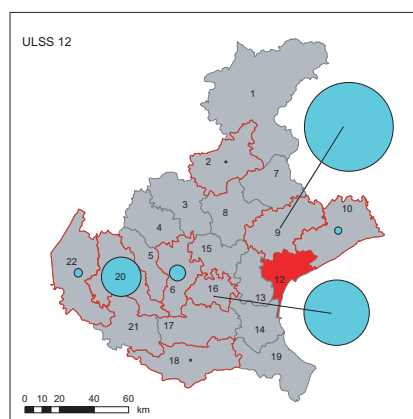
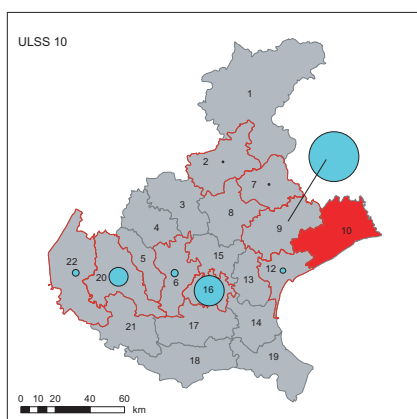
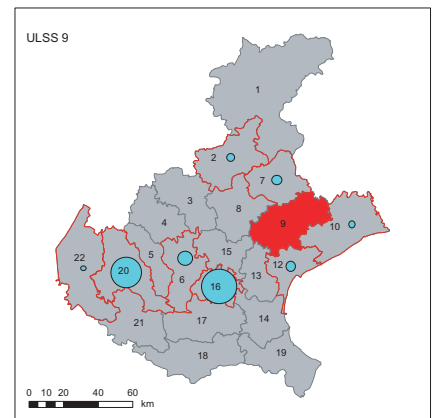
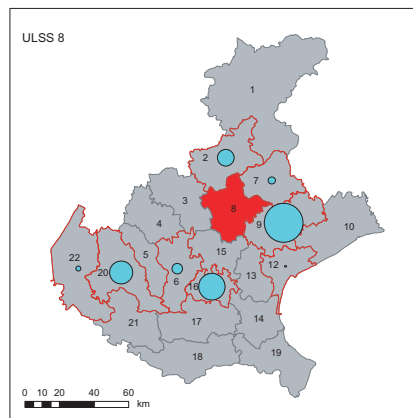
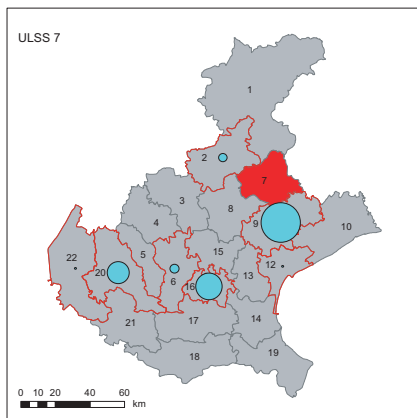
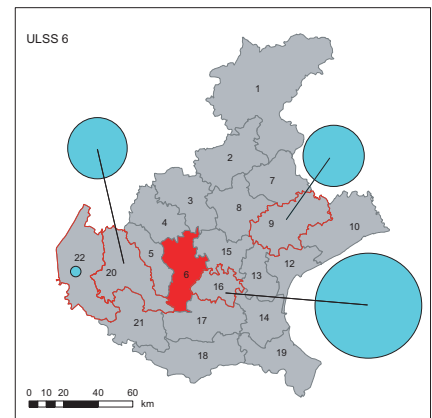
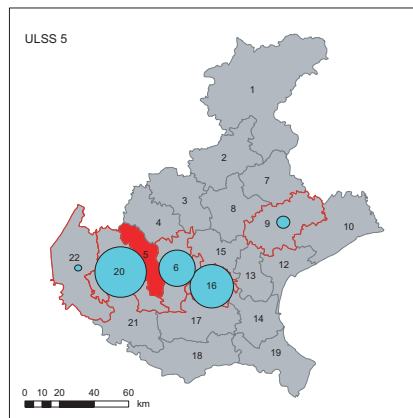
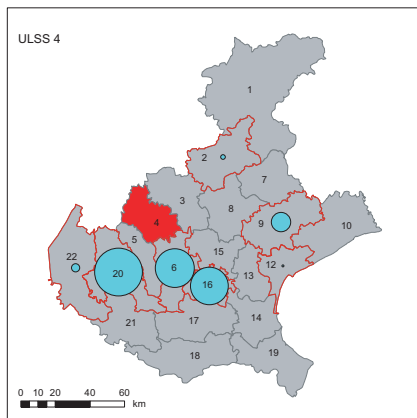
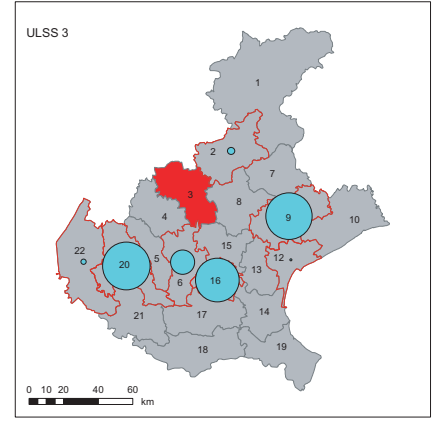
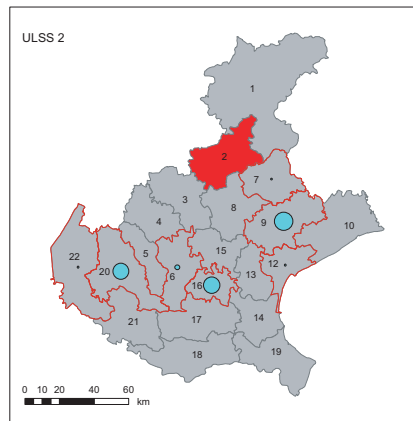
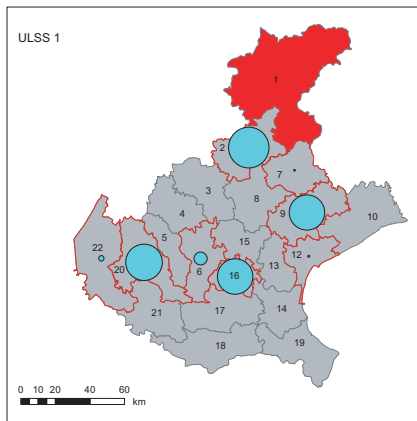


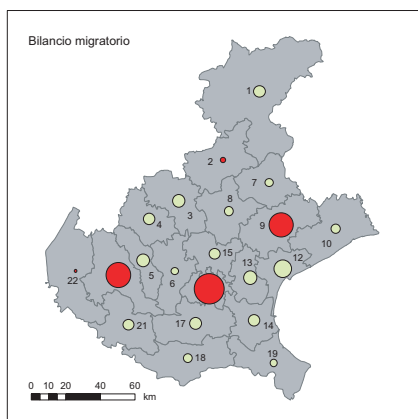
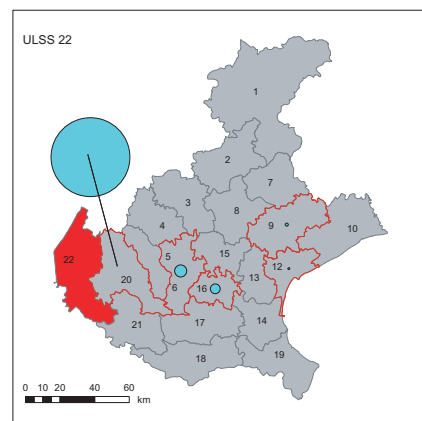
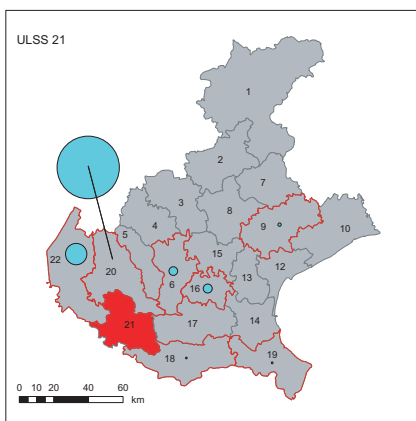
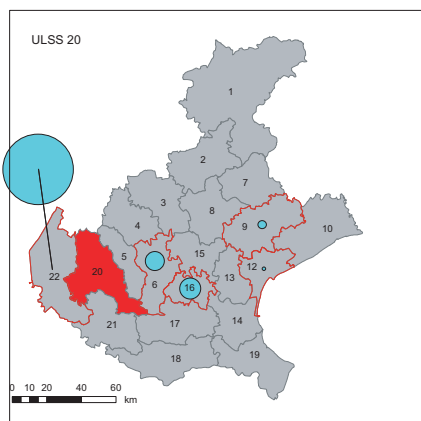
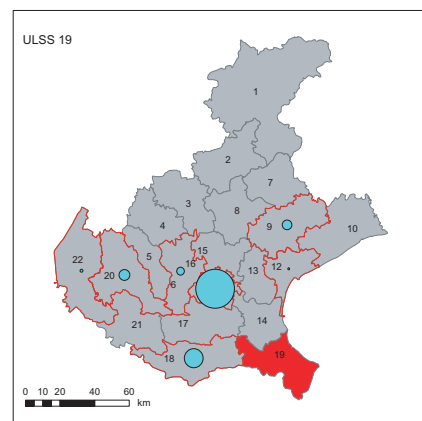
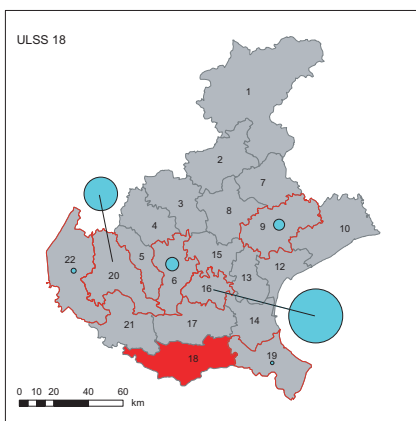
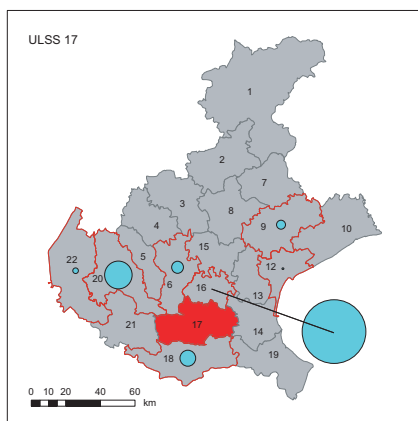
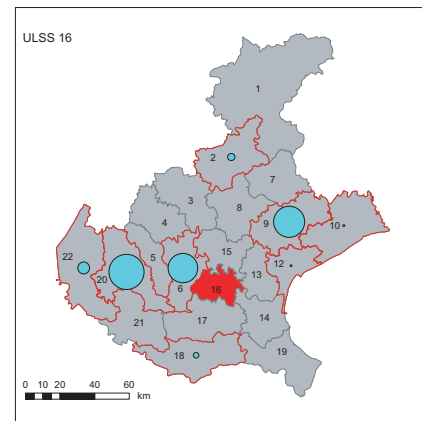
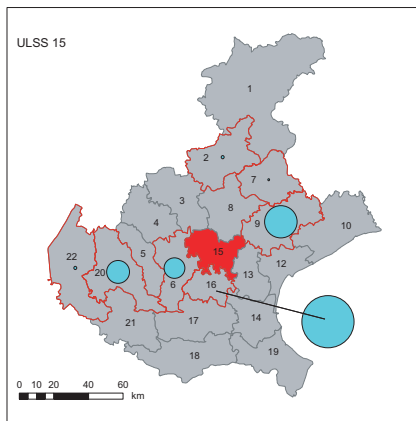
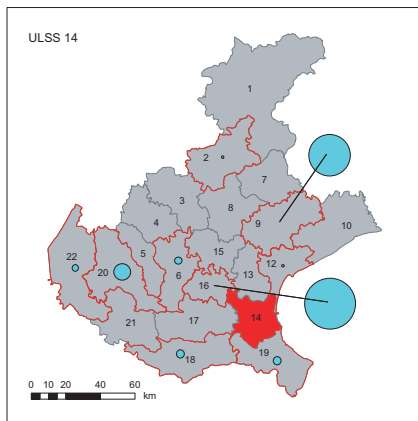
Numero di ricoveri di pazienti migrati



Fonte: Datawarehouse Sanità, Regione Veneto

Migrazione dei pazienti psichiatrici verso case di cura private (2000-2007)





Bilancio migratorio

Numero di ricoveri di pazienti migrati



- Bilancio positivo
- Bilancio negativo
- Confine delle ULSS

Migrazioni per ULSS

Numero di ricoveri di pazienti migrati



- ULSS che acquisiscono pazienti
- ULSS che non acquisiscono pazienti
- ULSS di pertinenza dei pazienti migrati