

LA TUTELA DELLA SALUTE MENTALE NEL VENETO

Rapporto 2007

FLUSSO SCHEDA DI DIMISSIONE OSPEDALIERA
GRAFICI E MAPPE

AZIENDA ULSS 16
PADOVA

Novembre 2008

A cura del Gruppo Tecnico-Scientifico Flussi Informativi Psichiatria

<i>Francesco Amaddeo</i>	<i>Università degli Studi di Verona, Dipartimento di Medicina e Sanità Pubblica, Sezione di Psichiatria</i>
<i>Andrea Angelozzi</i>	<i>Azienda ULSS n. 16 Padova</i>
<i>Gerardo Favaretto</i>	<i>Azienda ULSS n. 9 Treviso</i>
<i>Silvio Frazzangaro</i>	<i>Azienda ULSS n. 22 Bussolengo</i>
<i>Renato Magnabosco</i>	<i>Azienda ULSS n. 5 Ovest Vicentino</i>
<i>Lorenzo Rampazzo</i>	<i>Servizio per la Tutela della Salute Mentale – Direzione regionale Piani e Programmi Socio Sanitari</i>
<i>Paolo Spolaore</i>	<i>Centro Regionale di Riferimento per il Coordinamento del Sistema Epidemiologico Regionale</i>
<i>Emanuele Toniolo</i>	<i>Azienda ULSS n. 18 Rovigo</i>
<i>Giuseppe Zamengo</i>	<i>Servizio Sistema Informativo Socio Sanitario e Tecnologie Informatiche – Direzione regionale Risorse Socio Sanitarie</i>

Elaborazioni a cura di

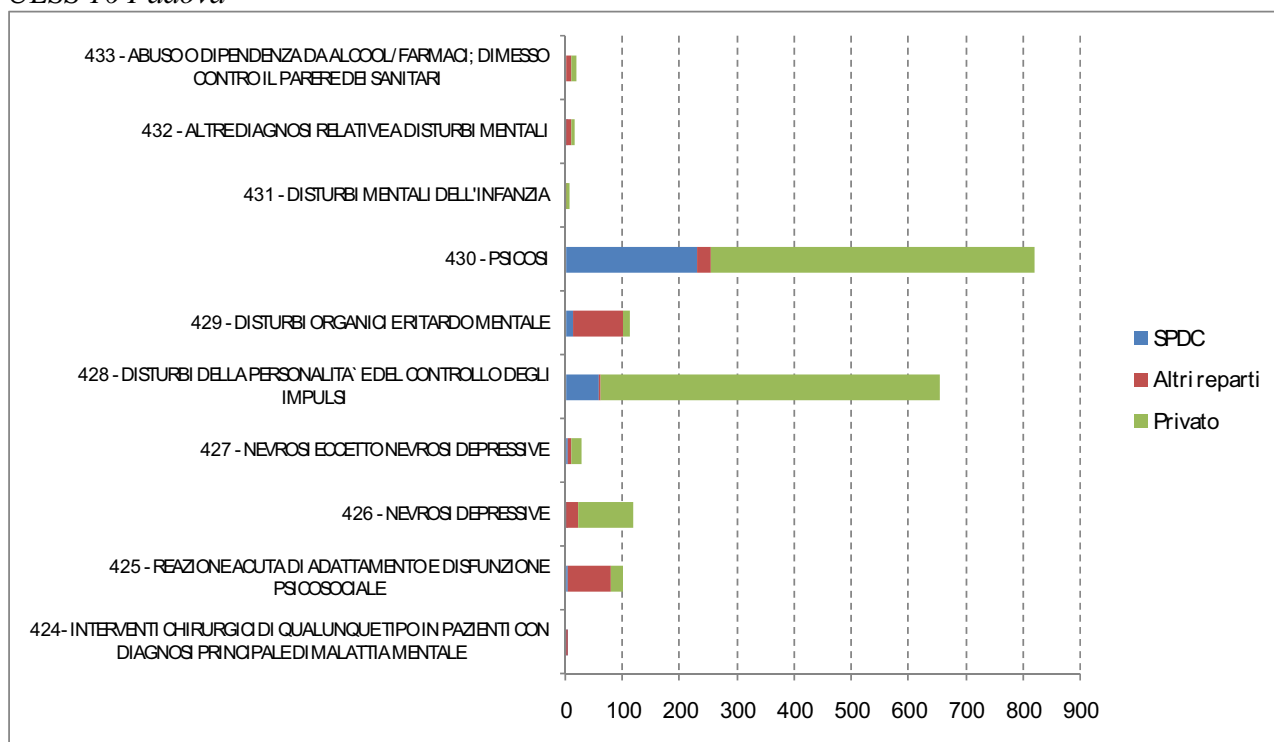
Unità di Ricerca “Registro Psichiatrico dei Casi, Economia e Geografia della Salute Mentale” della Sezione di Psichiatria e Psicologia Clinica, Dipartimento di Medicina e Sanità Pubblica, Università di Verona (Responsabile: prof. Francesco Amaddeo).

Fonte dei dati: Datawarehouse Sanità - Regione Veneto (Giuseppe Zamengo, Andrea Angelozzi).

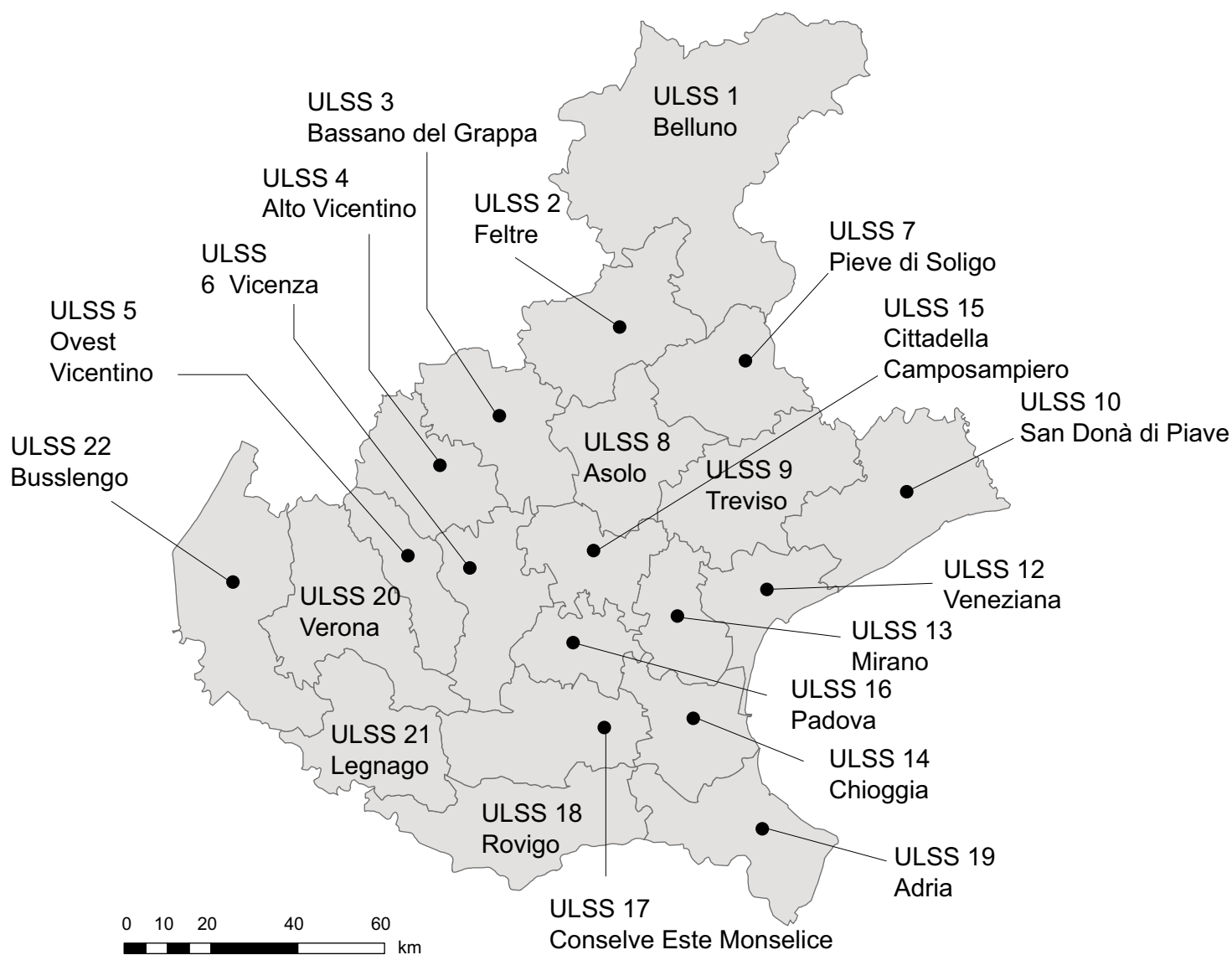
Strutture di riferimento

- *Servizio per la Tutela della Salute Mentale – Direzione regionale Piani e Programmi Socio Sanitari*
Palazzo Molin – San Polo n. 2514, 30125 Venezia
Telefono: 041 2793414; Fax 041 2793425; e-mail: salutementale@regione.veneto.it
- *CRRC SER – Regione Veneto*
Via Ospedale n. 18, 31033 Castelfranco Veneto
Telefono: 0423 732790; Fax: 0423 732791; e-mail: ser@ulssasolo.ven.it
- *Servizio Sistema Informativo Socio Sanitario e Tecnologie Informatiche – Direzione Risorse Socio Sanitarie*
Palazzo Molin – San Polo n. 2514, 30125 Venezia
Telefono: 041 2793450; Fax 041 2793506; e-mail: giuseppe.zamengo@regione.veneto.it

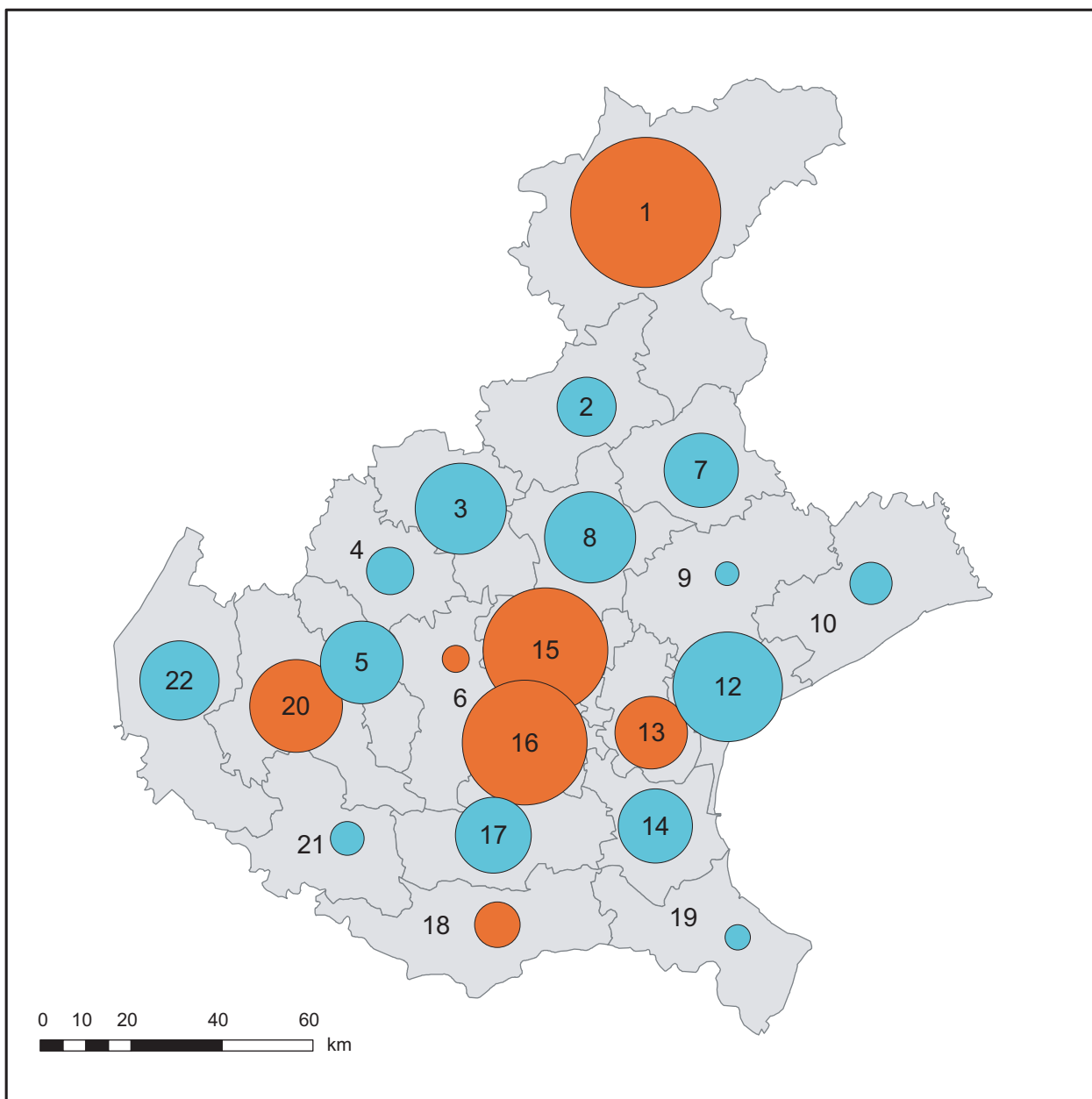
Dimissioni per DRG e per tipologia di reparto di ricovero. Anno 2006.
ULSS 16 Padova



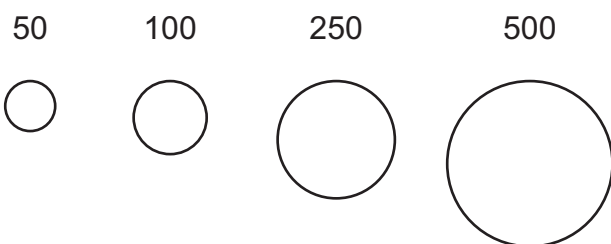
ULSS del Veneto



Migrazione dei pazienti psichiatrici verso SPDC in strutture pubbliche (2000-2007). Bilancio migratorio totale



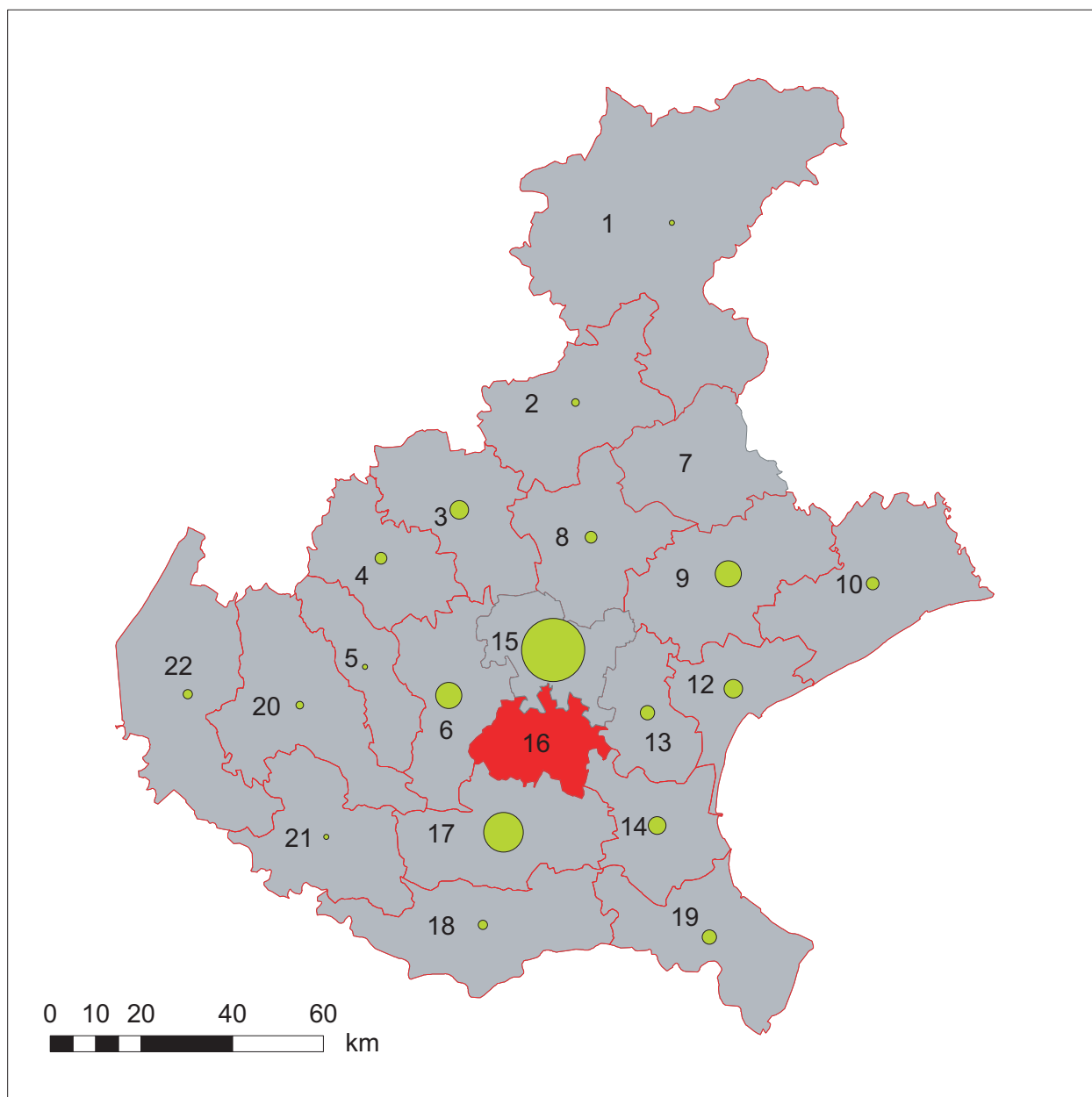
Numero di ricoveri di pazienti migrati



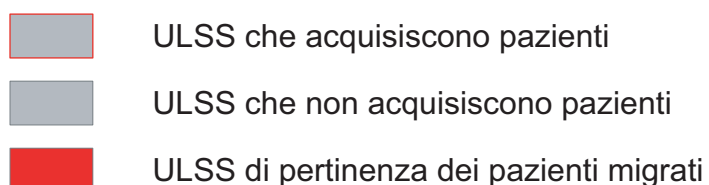
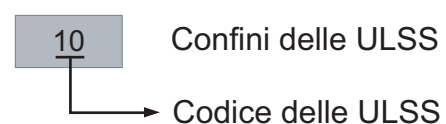
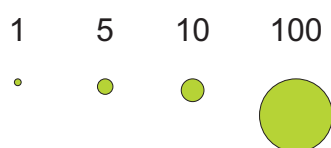
● bilancio positivo (pazienti acquisiti)
● bilancio negativo (pazienti ceduti)

10 Confini delle ULSS
Codice delle ULSS

Migrazione dei pazienti psichiatrici verso SPDC in strutture pubbliche (2000-2007) ULSS 16 Padova

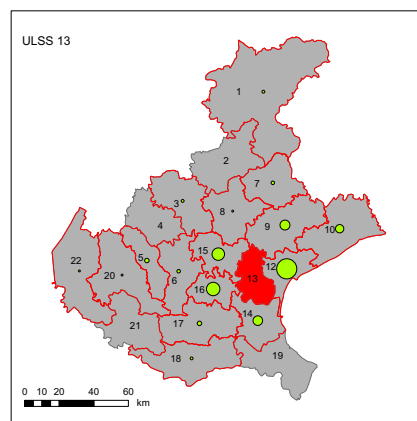
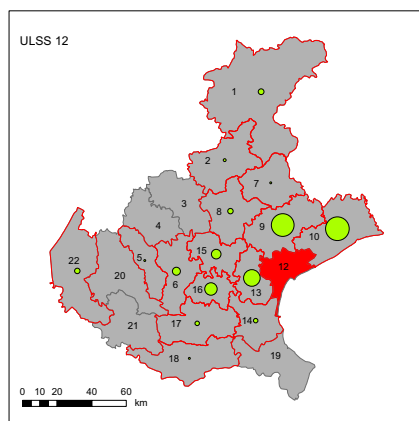
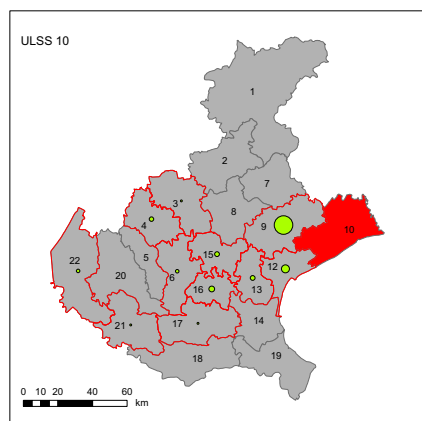
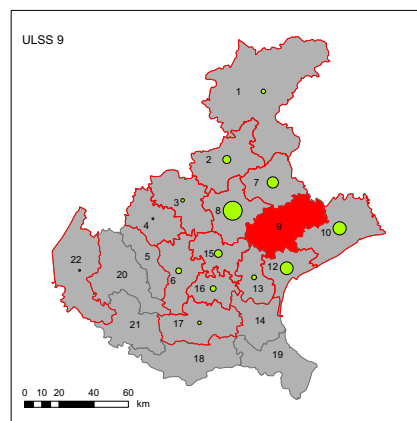
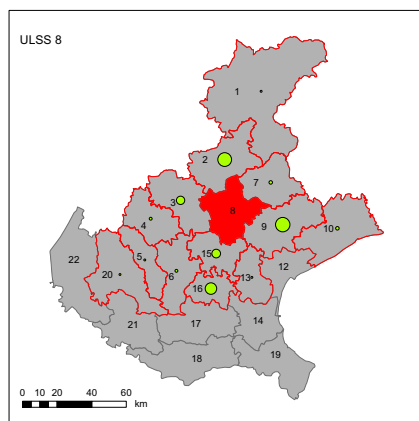
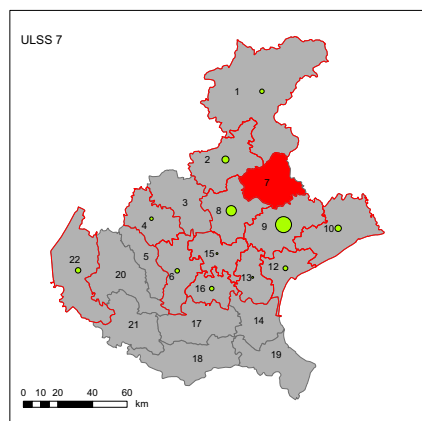
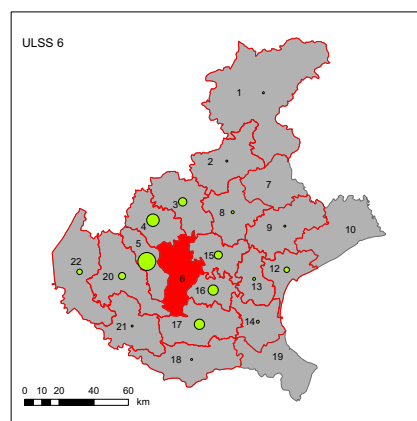
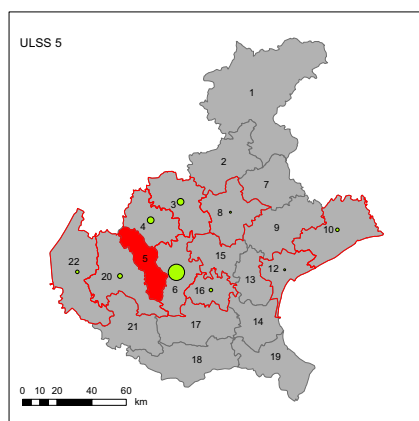
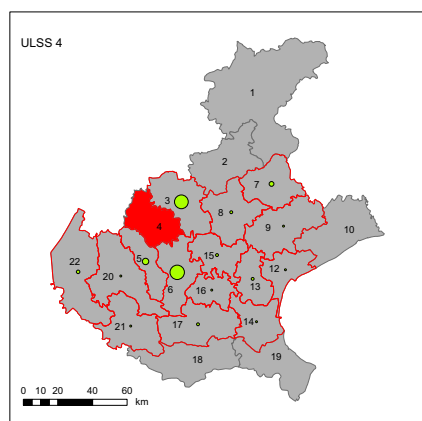
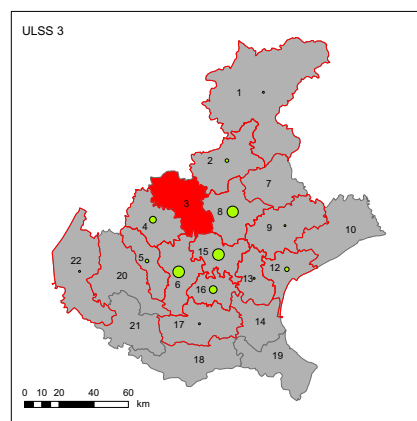
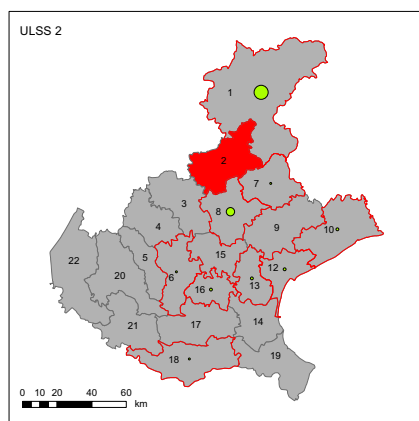
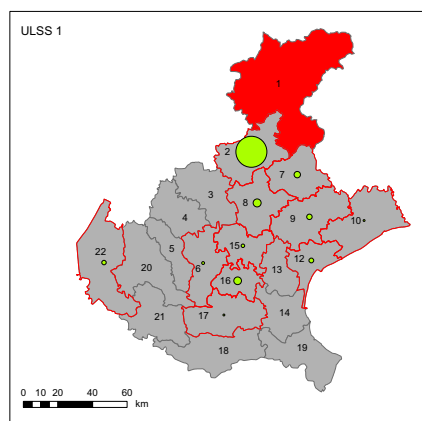


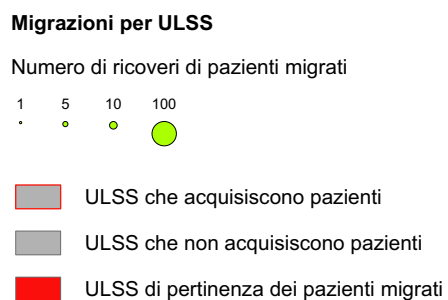
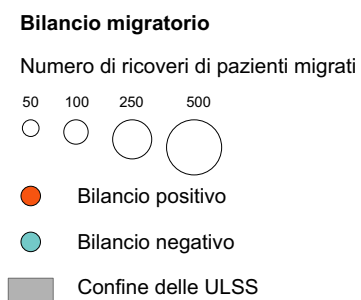
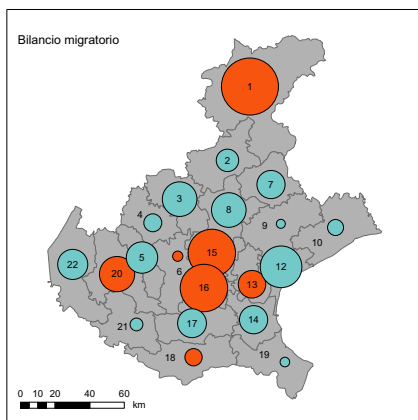
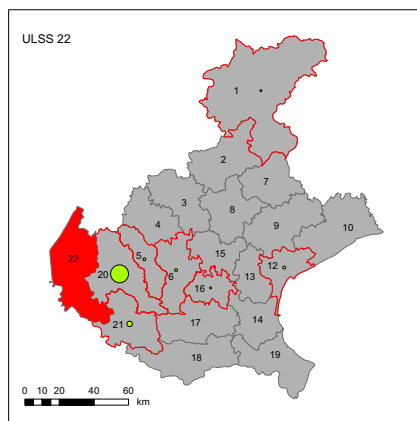
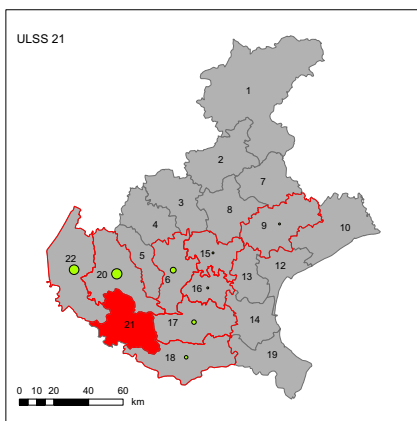
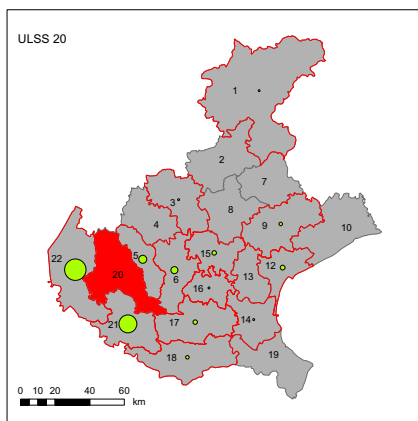
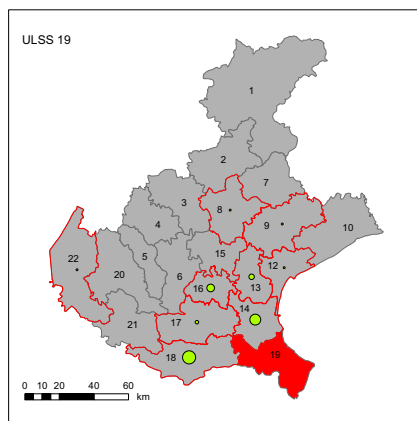
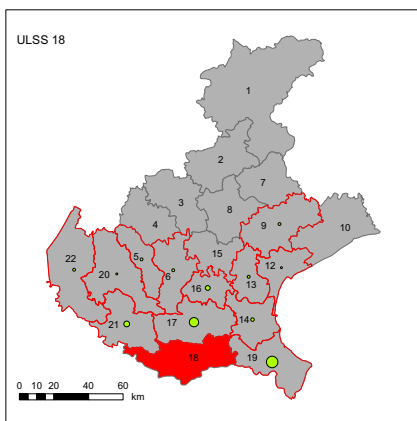
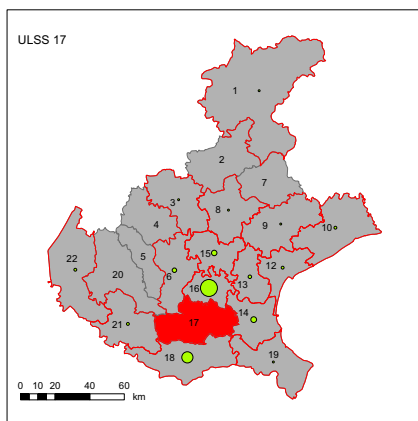
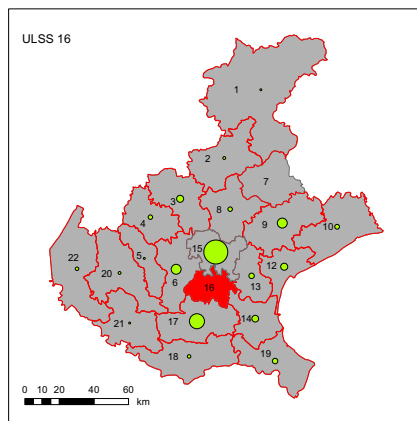
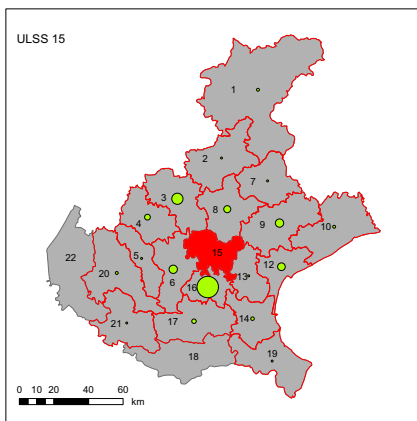
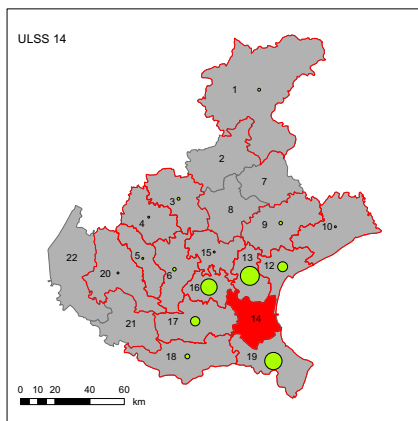
Numero di ricoveri di pazienti migrati



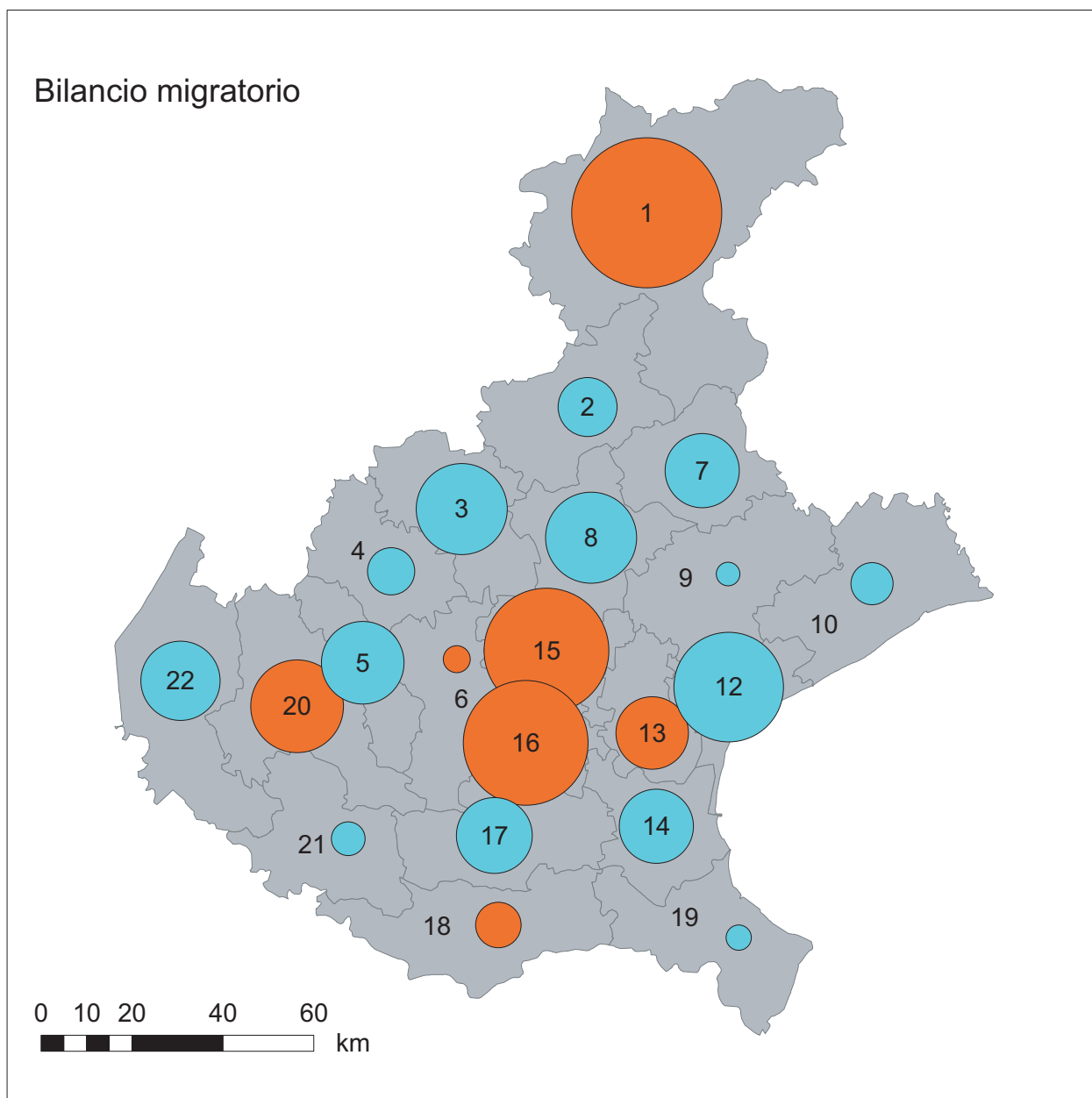
Fonte: Datawarehouse Sanità, Regione Veneto

Migrazione dei pazienti psichiatrici verso SPDC, in strutture pubbliche (2000-2007)

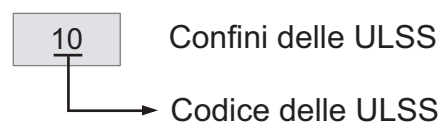
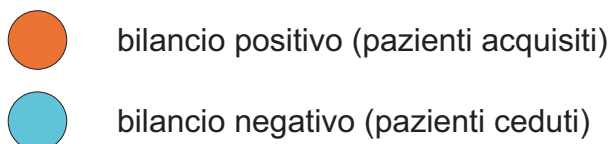
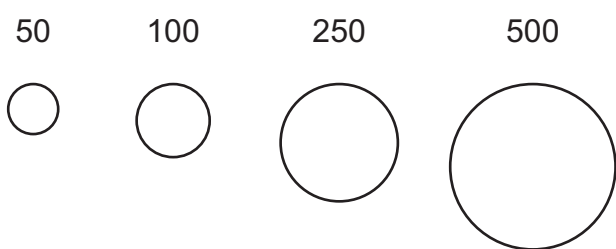




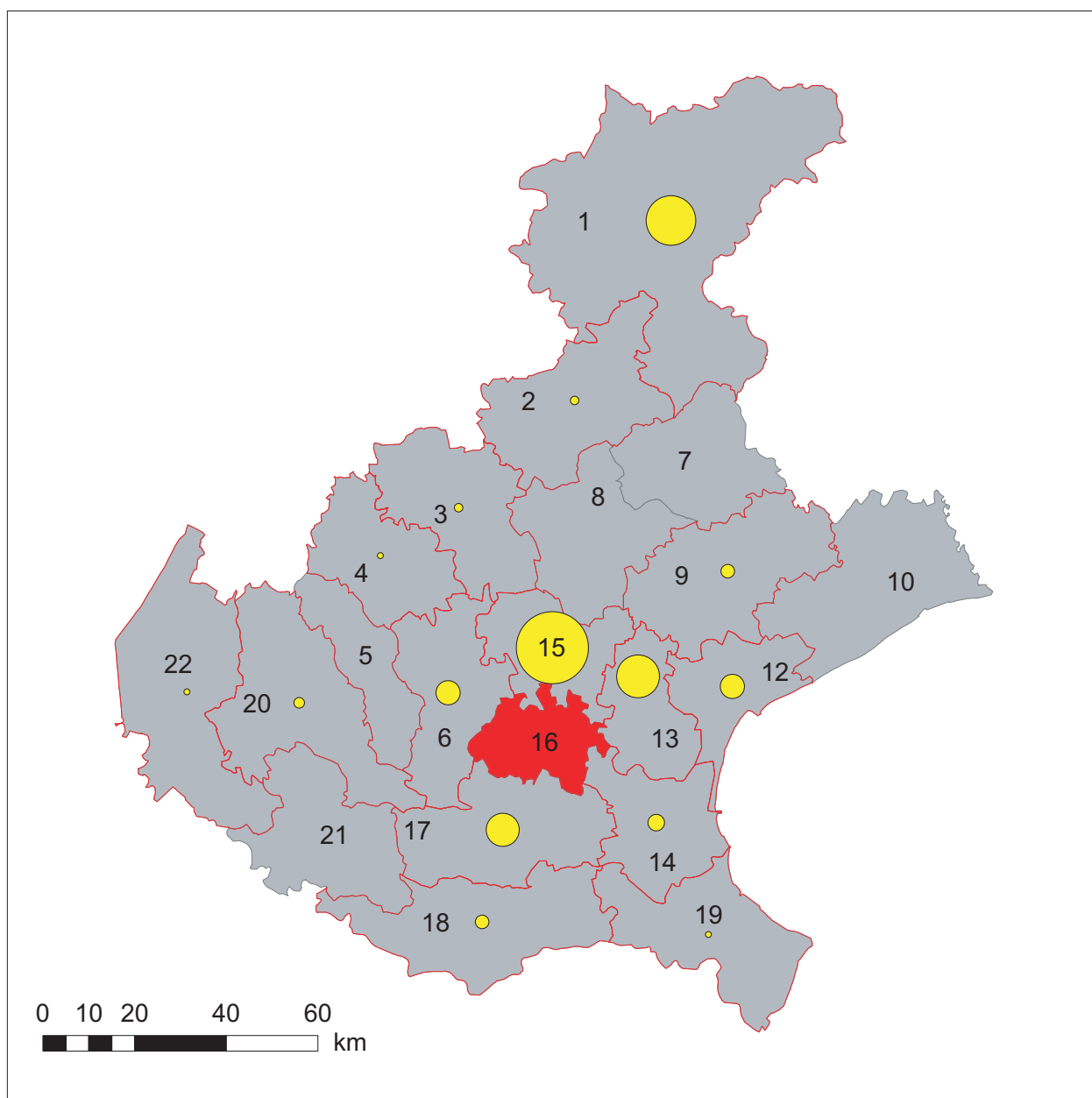
Migrazione dei pazienti psichiatrici verso altri reparti in strutture pubbliche (2000-2007). Bilancio migratorio totale



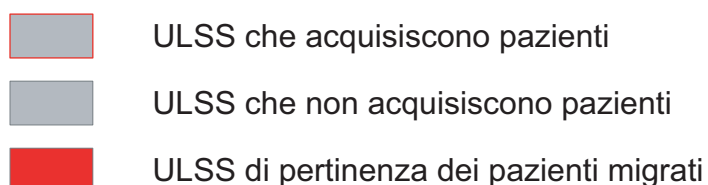
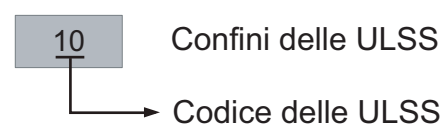
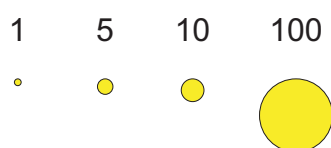
Numero di ricoveri di pazienti migrati



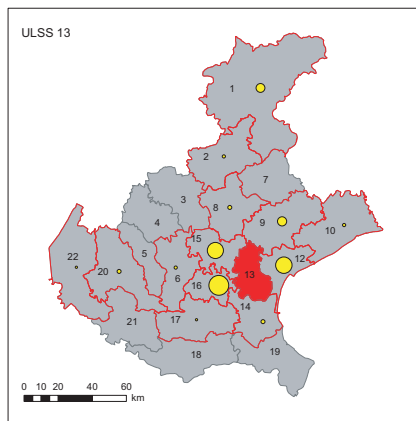
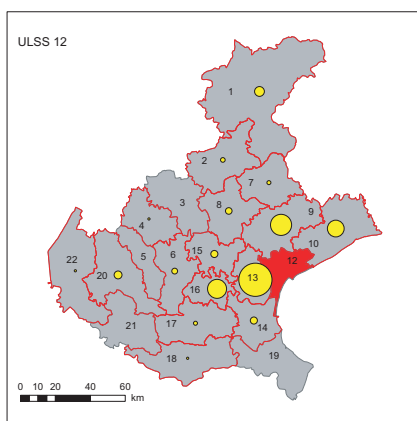
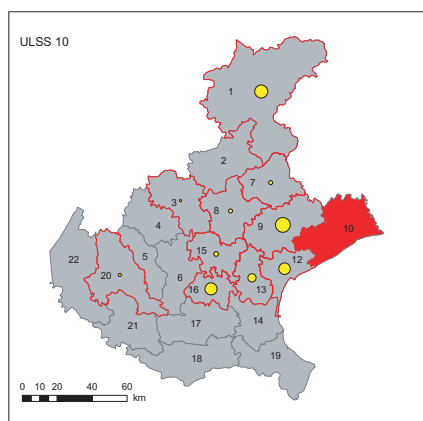
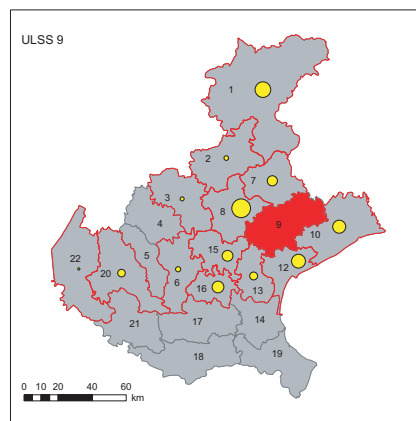
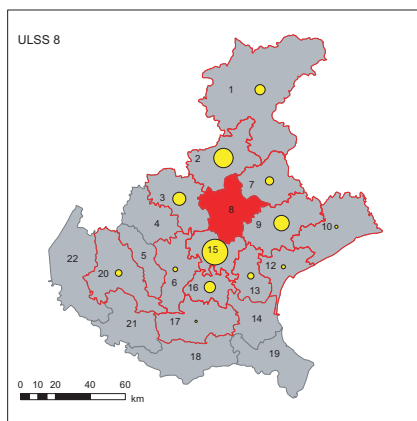
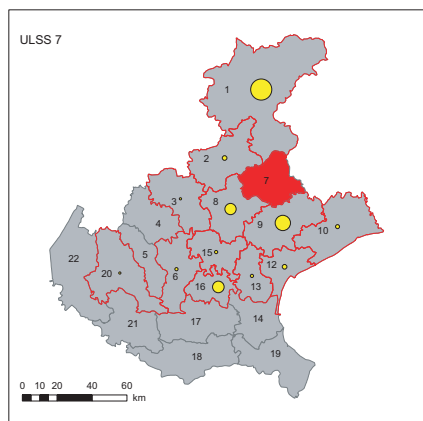
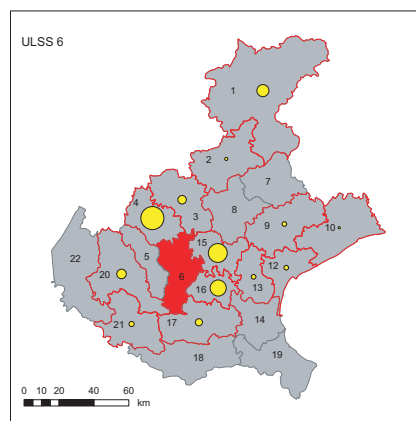
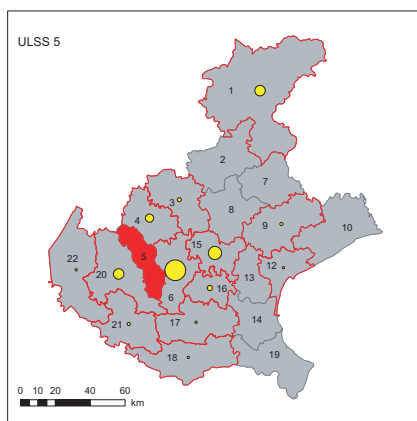
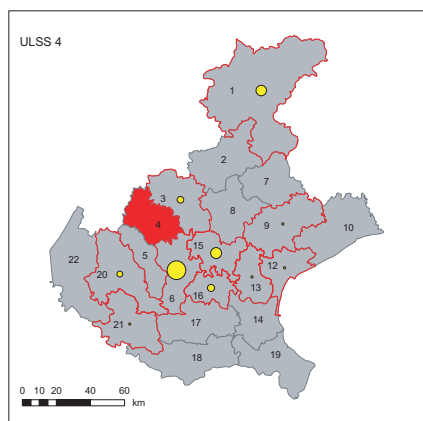
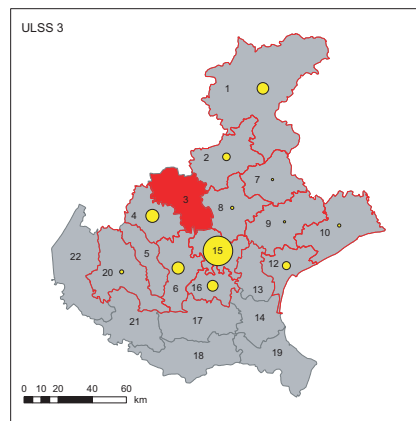
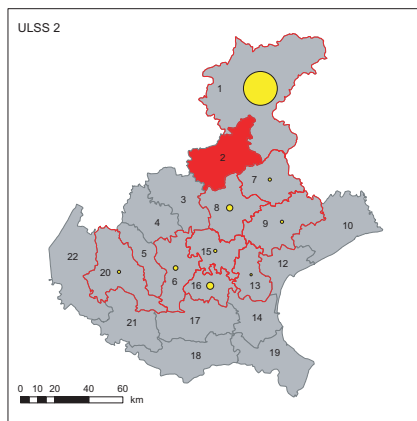
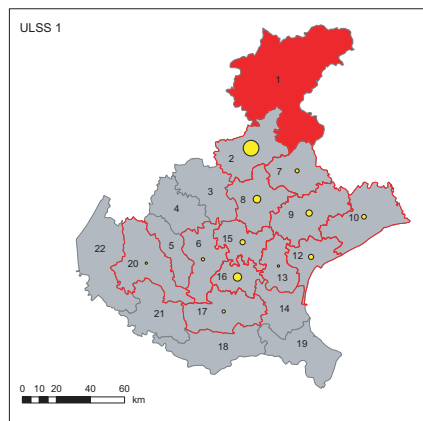
Migrazione dei pazienti psichiatrici verso altri reparti, in strutture pubbliche (2000-2007) ULSS 16 Padova

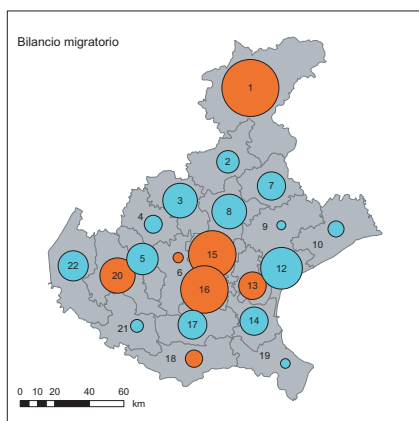
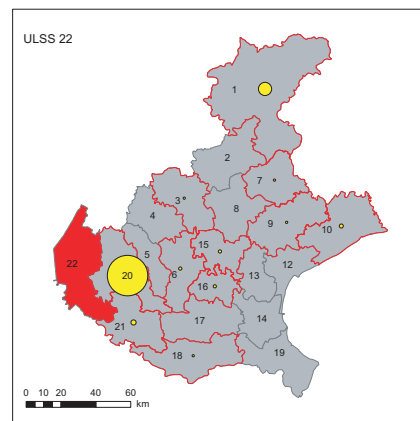
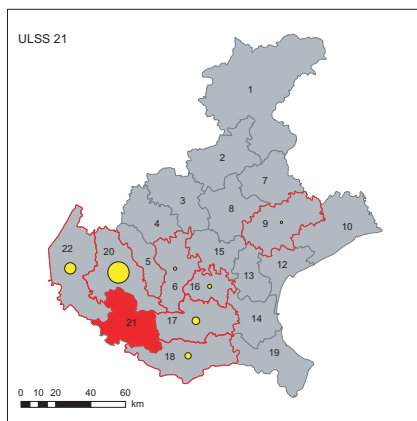
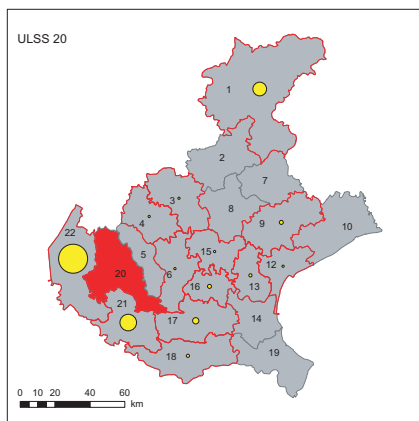
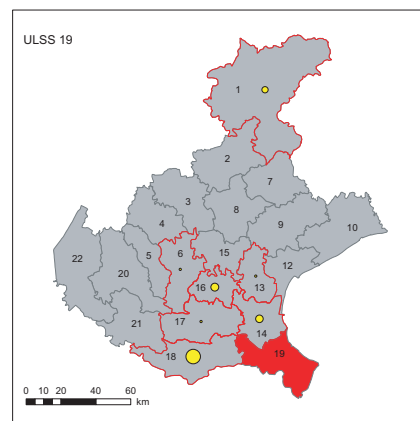
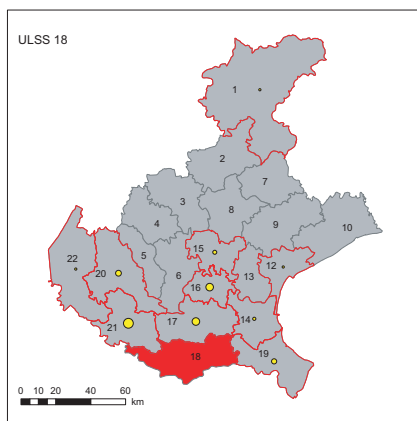
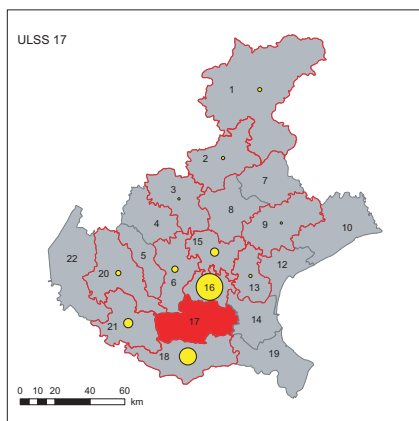
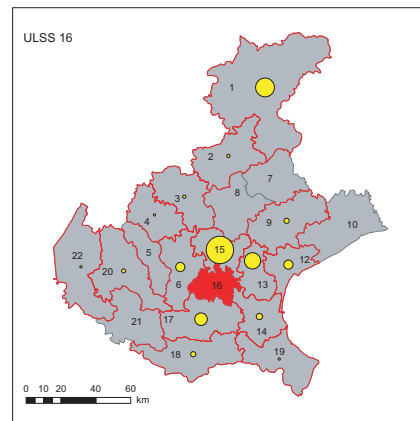
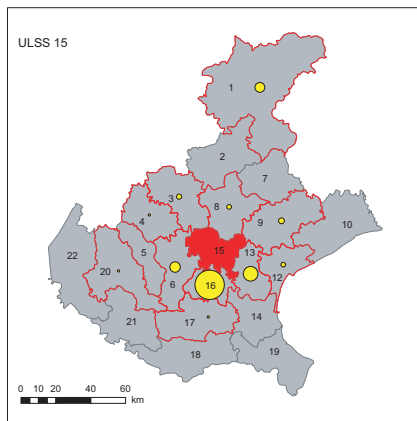
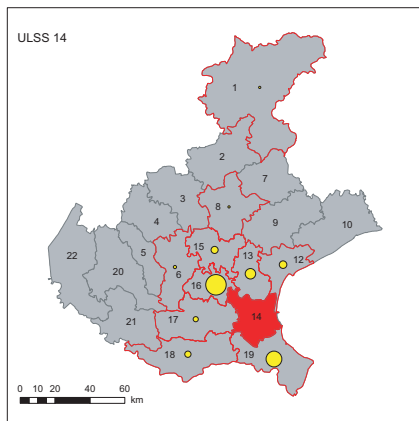


Numero di ricoveri di pazienti migrati



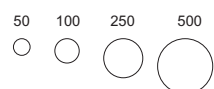
Migrazione dei pazienti psichiatrici verso altri reparti, in strutture pubbliche (2000-2007)





Bilancio migratorio

Numero di ricoveri di pazienti migrati



● Bilancio positivo

● Bilancio negativo

■ Confine delle ULSS

Migrazioni per ULSS

Numero di ricoveri di pazienti migrati

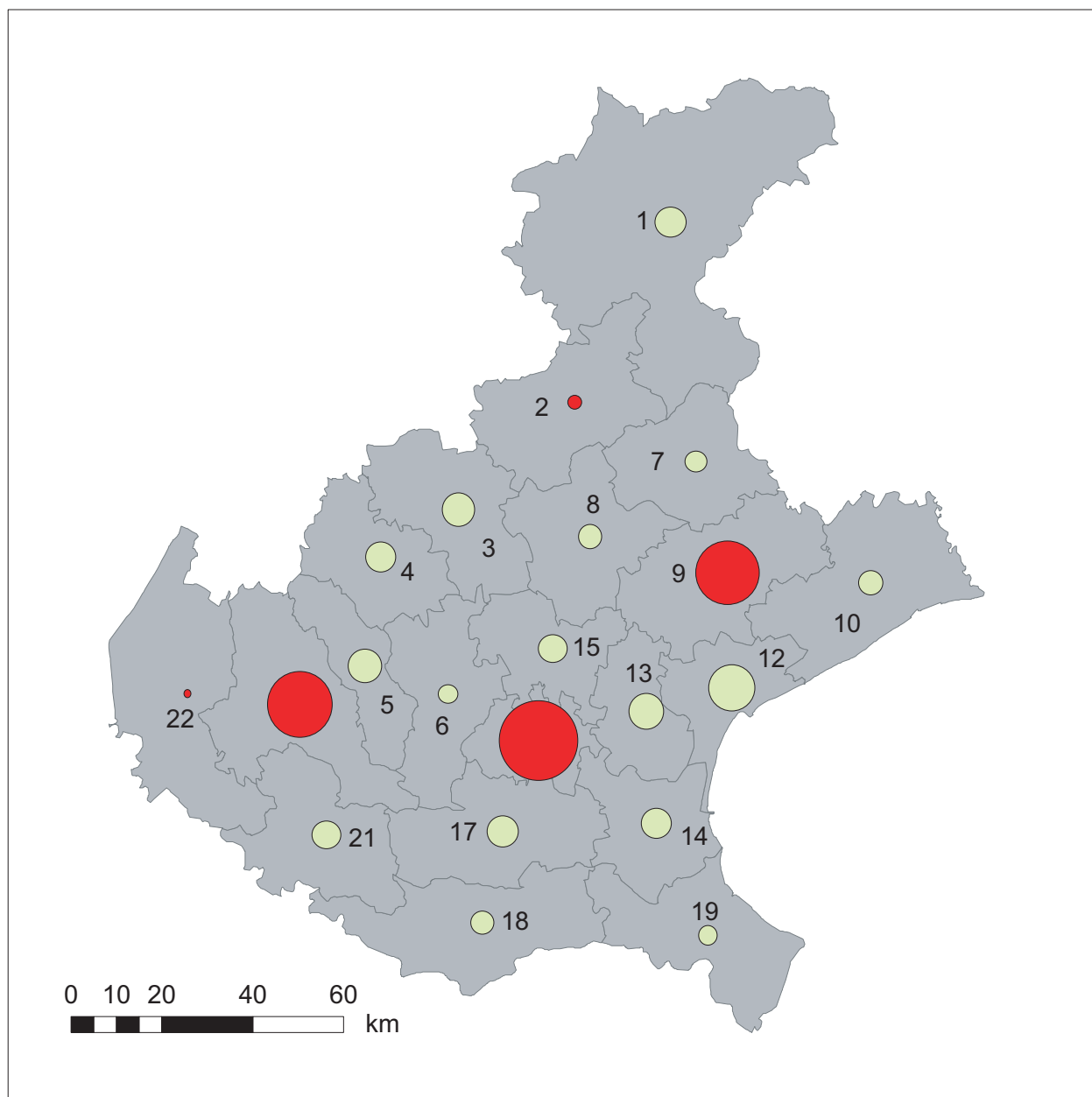


■ ULSS che acquisiscono pazienti

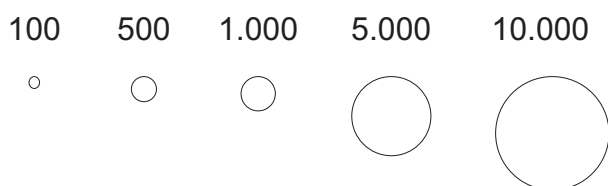
■ ULSS che non acquisiscono pazienti

■ ULSS di pertinenza dei pazienti migrati

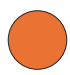

Migrazione dei pazienti psichiatrici verso case di cura private, (2000-2007). Bilancio migratorio totale



Numero di ricoveri di pazienti migrati

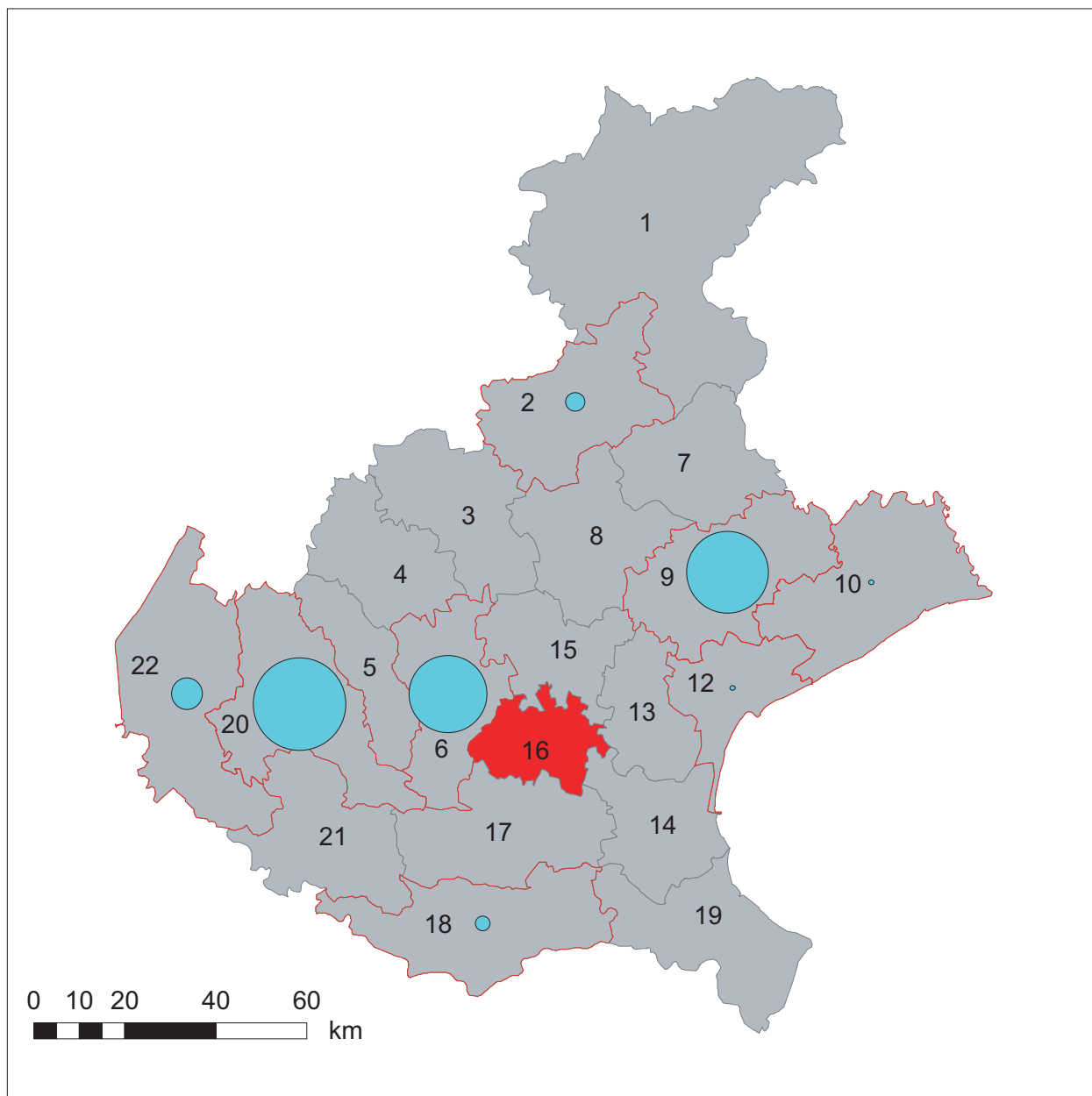


10 Confini delle ULSS
Codice delle ULSS

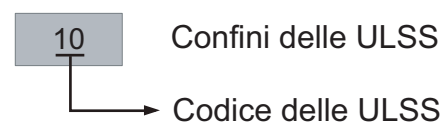
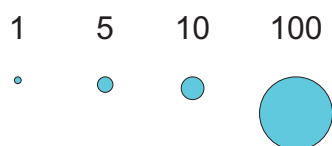
 bilancio positivo (pazienti acquisiti)
 bilancio negativo (pazienti ceduti)




Fonte: Datawarehouse Sanità, Regione Veneto

Migrazione dei pazienti psichiatrici verso case di cura private, (2000-2007) ULSS 16 Padova



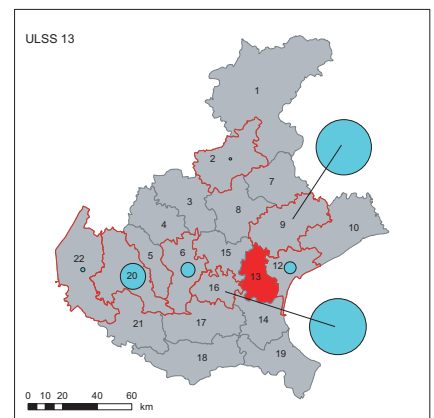
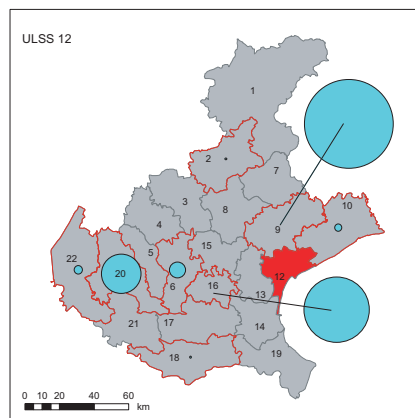
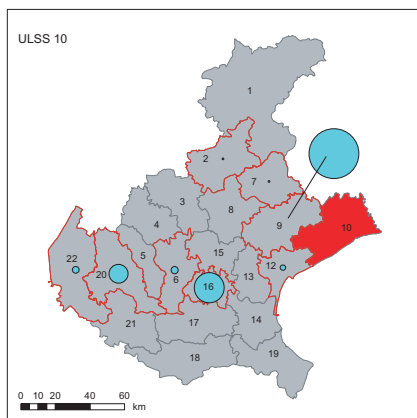
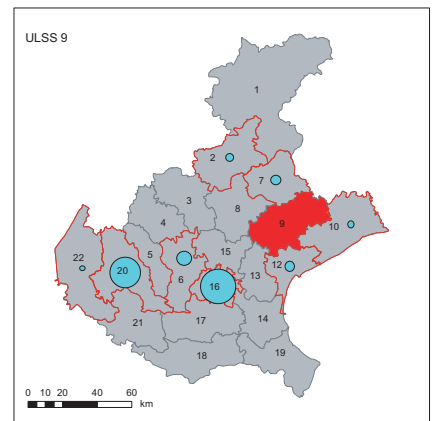
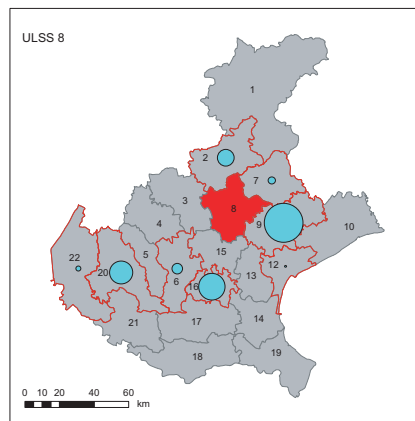
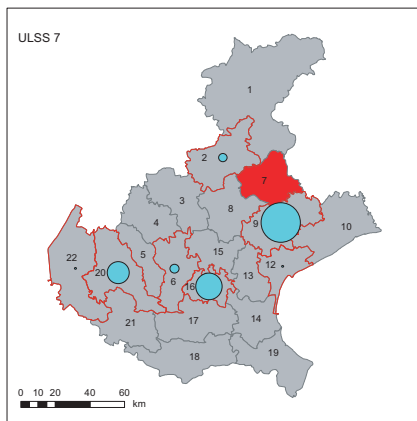
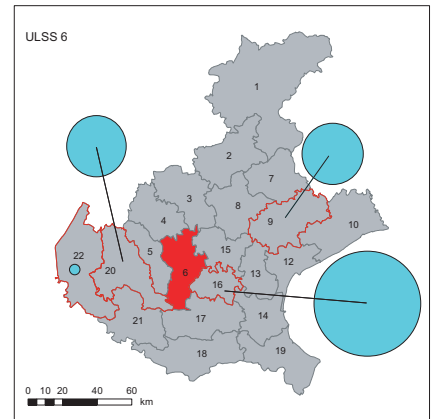
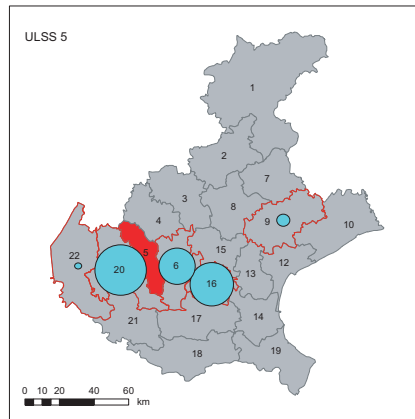
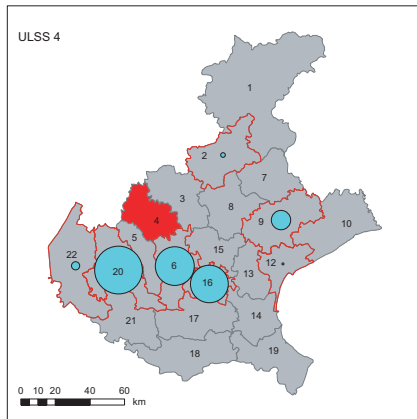
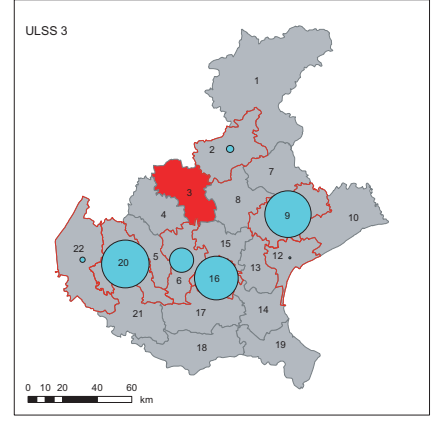
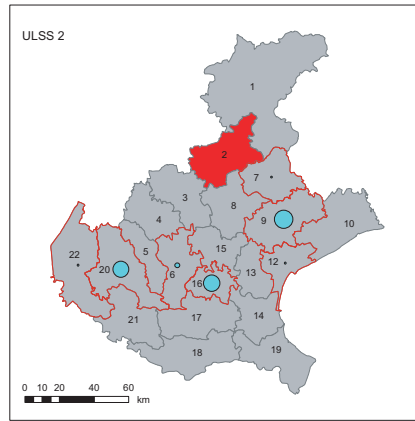
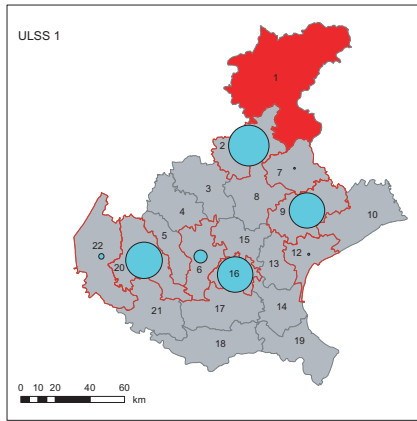
Numero di ricoveri di pazienti migrati

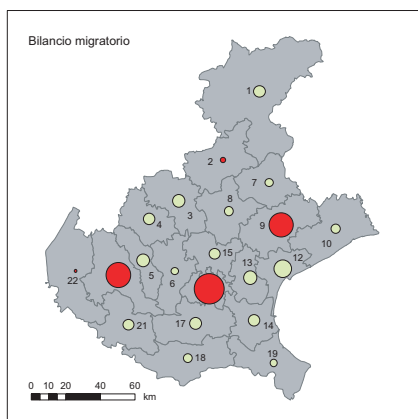
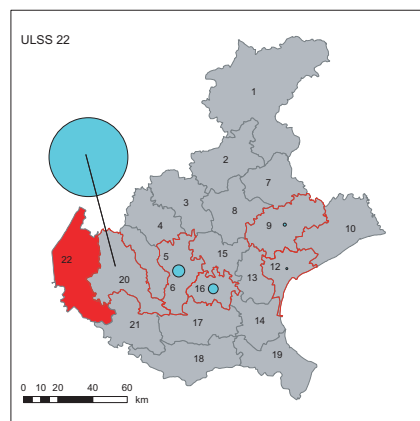
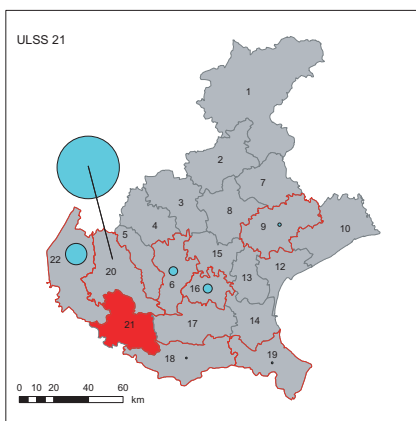
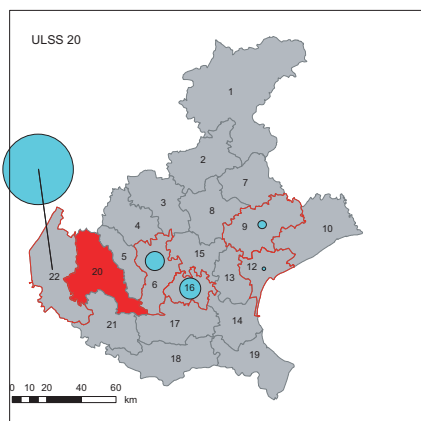
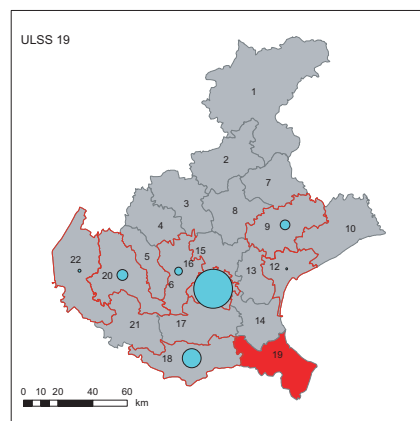
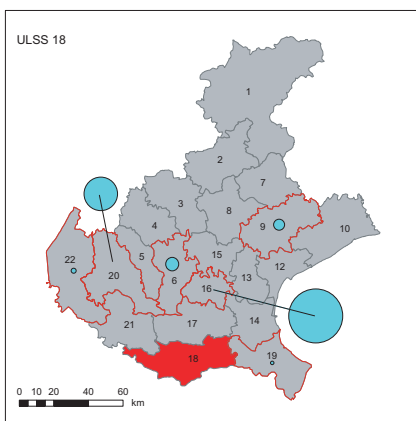
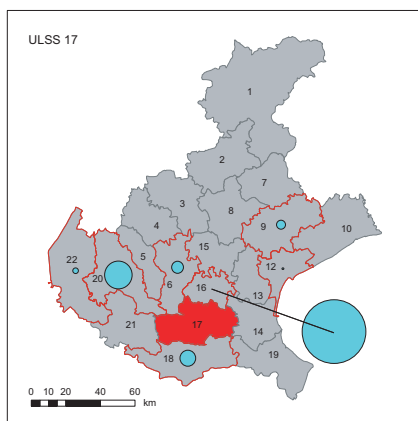
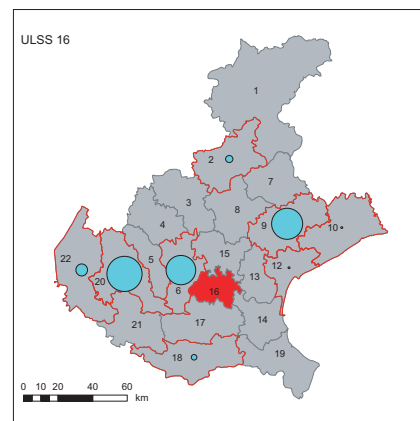
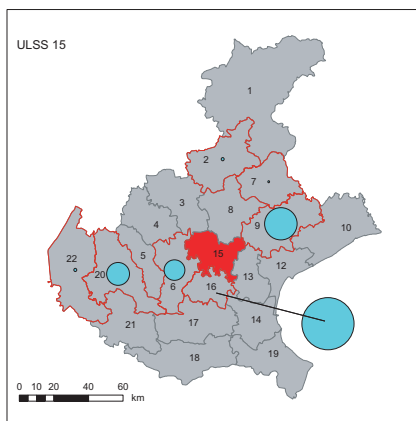
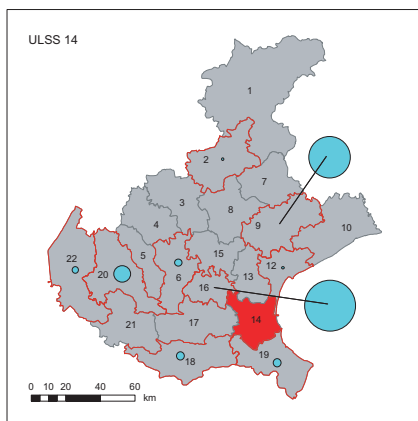


-  ULSS che acquisiscono pazienti
-  ULSS che non acquisiscono pazienti
-  ULSS di pertinenza dei pazienti migrati

Fonte: Datawarehouse Sanità, Regione Veneto

Migrazione dei pazienti psichiatrici verso case di cura private (2000-2007)





Bilancio migratorio

Numero di ricoveri di pazienti migrati



- Bilancio positivo
- Bilancio negativo
- Confine delle ULSS

Migrazioni per ULSS

Numero di ricoveri di pazienti migrati



- ULSS che acquisiscono pazienti
- ULSS che non acquisiscono pazienti
- ULSS di pertinenza dei pazienti migrati